



Datasheet for ABIN4369890

ICOSLG Protein (AA 18-135) (His-DYKDDDDK-Strep II Tag)



[Go to Product page](#)

2 Images

Overview

| | |
|-------------------------------|--|
| Quantity: | 2 µg |
| Target: | ICOSLG |
| Protein Characteristics: | AA 18-135 |
| Origin: | Human |
| Source: | HEK-293T Cells |
| Protein Type: | Recombinant |
| Purification tag / Conjugate: | This ICOSLG protein is labelled with His-DYKDDDDK-Strep II Tag. |
| Application: | SDS-PAGE (SDS), Western Blotting (WB), ELISA, Protein Interaction (PI) |

Product Details

| | |
|------------------|---|
| Purpose: | ICOSLG (Human) Recombinant Protein |
| Sequence: | ADTQEKEVRA MVGSDVELSC ACPEGSRFDL NDVYVYWQTS ESKTVWVYHI PQNSSLENVD SRYRNRALMS PAGMLRGDFS LRLFNVTPQD EQKFHCLVLS QSLGFQEVLS VEVTLHVA |
| Characteristics: | Purified ICOSLG (AAH64637.1 18 a.a. - 135 a.a.) human recombinant protein with His-Flag-StrepII tag at N-terminus expressed in human cells. |
| Purification: | Transfection of pSuper-ICOSLG plasmid into HEK293T cell, and the expressed protein was purified by Strep-Tactin affinity column. |

Target Details

| | |
|-------------------|--|
| Target: | ICOSLG |
| Alternative Name: | ICOSLG (ICOSLG Products) |

Target Details

| | |
|-------------|--|
| Background: | Gene: inducible T-cell co-stimulator ligand Synonyms: B7-H2, B7H2, B7RP-1, B7RP1, CD275, GL50, ICOS-L, ICOSL, KIAA0653, LICOS |
| Gene ID: | 23308 |
| Pathways: | Production of Molecular Mediator of Immune Response, Activated T Cell Proliferation |

Application Details

| | |
|--------------------|--|
| Application Notes: | Optimal working dilution should be determined by the investigator. |
| Restrictions: | For Research Use only |

Handling

| | |
|------------------|---|
| Format: | Liquid |
| Concentration: | 10 µg/mL |
| Buffer: | 100 mM Tris-HCl pH 8.0, 150 mM NaCl, 1 mM EDTA, and 5 mM desthiobiotin. |
| Preservative: | Other preservative |
| Handling Advice: | Aliquot to avoid repeated freezing and thawing. |
| Storage: | -80 °C |

Images

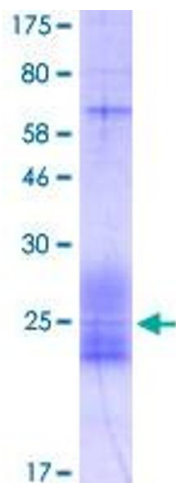


Image 1.

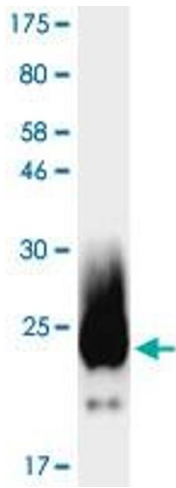


Image 2.