



[Go to Product page](#)

Datasheet for ABIN4369905

CHAC1 Protein (AA 1-222) (GST tag)

1 Image

Overview

Quantity:	10 µg
Target:	CHAC1
Protein Characteristics:	AA 1-222
Origin:	Human
Source:	Wheat germ
Protein Type:	Recombinant
Purification tag / Conjugate:	This CHAC1 protein is labelled with GST tag.
Application:	ELISA, Western Blotting (WB), Antibody Array (AA), Affinity Purification (AP)

Product Details

Purpose:	CHAC1 (Human) Recombinant Protein (P01)
Sequence:	MKQESAAPNT PPTSQSPTPS AQFPRNDGDP QALWIFGYGS LVWRPDFAYS DSRVGFVRGY SRRFWQGDTF HRGSDKMPGR VVTLLDHEG CTWGVAYVQVQ GEQVSKALKY LNVREAVLGG YDTKEVTFYP QDAPDQPLKA LAYVATPQNP GYLGPAPEEA IATQILACRG FSGHNLEYLL RLADFMQLCG PQAQDEHLAA IVDAVGTMLP CFCPTEQALA LV
Characteristics:	Human CHAC1 full-length ORF (NP_077016.1, 1 a.a. - 222 a.a.) recombinant protein with GST tag at N-terminal.
Purification:	in vitro wheat germ expression system

Target Details

Target:	CHAC1
---------	-------

Target Details

Alternative Name:	CHAC1 (CHAC1 Products)
Background:	Gene: ChaC, cation transport regulator homolog 1 (E. coli) Synonyms: MGC4504
Gene ID:	79094
NCBI Accession:	NM_024111

Application Details

Application Notes:	Optimal working dilution should be determined by the investigator.
Restrictions:	For Research Use only

Handling

Buffer:	50 mM Tris-HCl, 10 mM reduced Glutathione, pH =8.0 in the elution buffer.
Handling Advice:	Aliquot to avoid repeated freezing and thawing.
Storage:	-80 °C
Storage Comment:	Best use within three months from the date of receipt of this protein.

Images

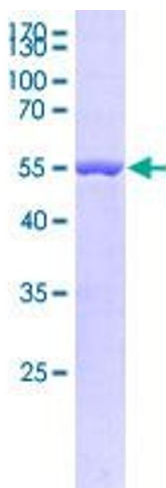


Image 1.