

Datasheet for ABIN452590  
**anti-CRP antibody**

3 Images



[Go to Product page](#)

## Overview

Quantity:	0.5 mg
Target:	CRP
Reactivity:	Human
Host:	Mouse
Clonality:	Monoclonal
Conjugate:	This CRP antibody is un-conjugated
Application:	Western Blotting (WB), Enzyme Immunoassay (EIA)

## Product Details

Immunogen:	Purified CRP from human pleural fluid.
Clone:	S5G1
Isotype:	IgG1
Specificity:	Reactive with Human CRP in Immunoblot and ELISA
Cross-Reactivity (Details):	Species reactivity (tested):Human.
Characteristics:	Synonyms: PTX1, C Reactive Protein, Pentraxin-related
Purification:	Affinity Chromatography on Protein G.

## Target Details

Target:	CRP
Abstract:	<a href="#">CRP Products</a>

## Target Details

**Background:** C Reactive Protein is a major acute phase reactant synthesized primarily in the liver hepatocytes. It is a pentraxin (cyclic pentameric protein) compound of five identical nonglycosylated subunits of 206 amino acids each (m.w. 24 kDa), that are bound noncovalently to form the physiologic CRP molecule (m.w. 117.5 kDa). C Reactive Protein mediates activities associated with preimmune nonspecific host resistance. It is opsonic, an initiator of the classical complement cascade and an activator of monocytes/macrophages. CRP also binds to several nuclear components including chromatin, histones and snRNP, suggesting that it may play a role as a scavenger during cell necrosis. Studies have revealed that among other markers of inflammation, CRP shows the strongest association with cardiovascular events. Many clinical studies demonstrated that coronary mortality among patients with unstable angina and elevated CRP is significantly higher comparing with the patients without elevated CRP. Measurements of C reactive protein (hsCRP) in the patients with ischemic heart disease provide a novel method for detecting individuals at high risk of plaque rupture. Synonyms: C Reactive Protein, PTX1, Pentraxin-related

**Gene ID:** 1401

**UniProt:** [P02741](#)

**Pathways:** [Carbohydrate Homeostasis](#)

## Application Details

**Application Notes:** ELISA Immunoblotting (Western).  
Other applications not tested.  
Optimal dilutions are dependent on conditions and should be determined by the user.

**Restrictions:** For Research Use only

## Handling

**Reconstitution:** Restore with Double distilled water to adjust the final concentration to 1.0 mg/mL.

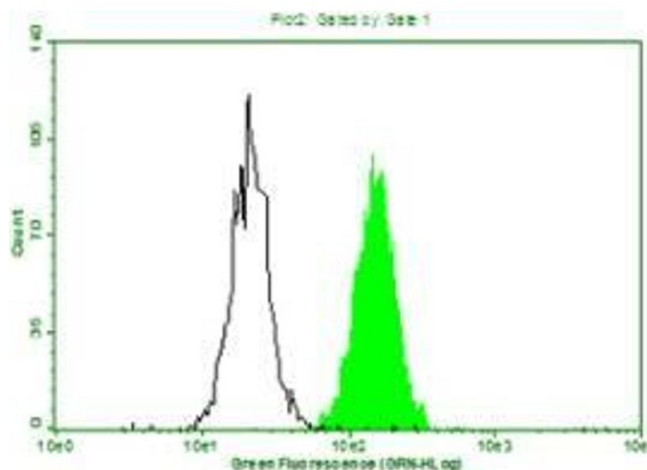
**Buffer:** 0.01 M PBS, pH 7.2 without preservatives.

**Preservative:** Without preservative

**Storage:** -20 °C

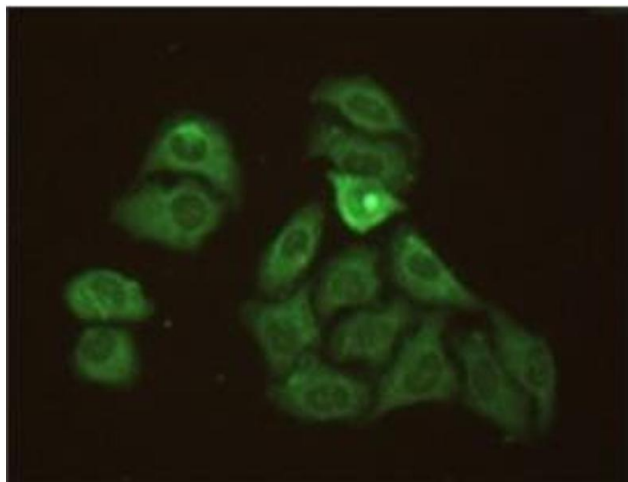
**Storage Comment:** Store the antibody at -20 °C. Avoid repeated freezing and thawing.  
Shelf life: one year from despatch.

**Expiry Date:** 12 months



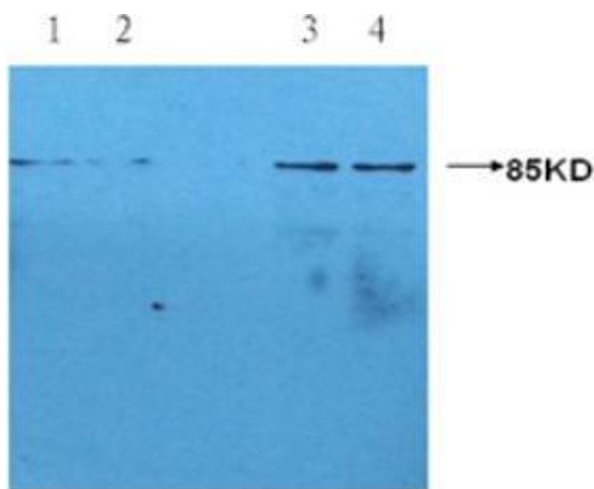
### Flow Cytometry

**Image 1.** Above is the histogram of HeLa cells stained with 10mg/mL anti-Human CRP mAb S5G1 and fluorescence labelled secondary antibody. Black line represents the histogram of HeLa cells stained with isotype control, mouse anti-TB 38Kd antigen monoclonal antibody (Clone B12F8).



### Immunofluorescence

**Image 2.** Methanol-fixed HeLa cells stained with 10mg/mL anti-Human CRP mAb S5G1 and fluorescence labelled secondary antibody.



### Western Blotting

**Image 3. Western blotting** using Mouse anti-human CRP monoclonal antibody (S5G1) at 1:1000 dilution. Lane1 & 2: HepG2 cell lysate. Lane3 & 4: HeLa cell lysate.