



[Go to Product page](#)

Datasheet for ABIN452654
anti-Mammaglobin A antibody

2 Images

Overview

Quantity:	0.5 mL
Target:	Mammaglobin A (SCGB2A2)
Reactivity:	Human, Mouse, Monkey
Host:	Rabbit
Clonality:	Monoclonal
Application:	Western Blotting (WB), Immunohistochemistry (Paraffin-embedded Sections) (IHC (p)), Enzyme Immunoassay (EIA)

Product Details

Immunogen:	Recombinant Mammaglobin, whole sequence
Clone:	31A5
Isotype:	IgG
Specificity:	This Mammaglobin antibody (clone 31A5) reacts with Human Mammaglobin A (10 kDa), no cross-reaction with Lypophilin B and Lypophilin C (Mammaglobin B). This Mammaglobin antibody (clone 31A5) is suitable for the detection of mammaglobin in metastatic mamma carcinoma, differential diagnosis of metastases in sentinel lymph nodes.
Cross-Reactivity (Details):	Species reactivity (tested): Human, Monkey, Mouse.
Characteristics:	Synonyms: Mammaglobin-A, Mammaglobin-1, Secretoglobin family 2A member 2, MGB1, UGB2
Purification:	Affinity Chromatography.

Target Details

Target: Mammaglobin A (SCGB2A2)

Abstract: [SCGB2A2 Products](#)

Background: Mammaglobin is a gene that is expressed almost exclusively in the normal breast epithelium and human breast cancer. It is a member of the secretoglobin gene family and forms a heterodimer with lipophilin B. It has been suggested that mammaglobin may be a useful marker for breast cancer clinical research. Studies investigating the detection of mRNA by RT PCR from circulating carcinoma cells in the peripheral blood of breast cancer patients have shown that mammaglobin is a highly specific marker and correlates with several prognostic factors, such as lymph node involvement. Synonyms: MGB1, Mammaglobin-1, Mammaglobin-A, Prostatein peptide C3, Prostatic steroid-binding protein C3, Secretoglobin family 2A member 2, UGB2

Gene ID: 4250

UniProt: [Q13296](#)

Application Details

Application Notes: ELISA. Western Blot. Immunohistochemistry on Paraffin Sections: 1 µg/mL. Formalin-fixed tissue may be pre-treated for 30 min at 100 °C with Unmasking Citrate buffer, buffered EDTA or Glycol based solution preferably in a pressure cooker. This antibody is suitable for the detection of mammaglobin in metastatic mammary carcinoma, differential diagnosis of metastases in sentinel lymph nodes. Positive Control: Mamma carcinoma, skin (eccrine sweat glands). Other applications not tested.

Optimal dilutions are dependent on conditions and should be determined by the user.

Restrictions: For Research Use only

Handling

Format: Liquid

Concentration: 50 µg/mL

Buffer: Stabilized Phosphate buffer, 0.09 % Sodium Azide

Preservative: Sodium azide

Precaution of Use: This product contains sodium azide: a POISONOUS AND HAZARDOUS SUBSTANCE which should be handled by trained staff only.

Handling

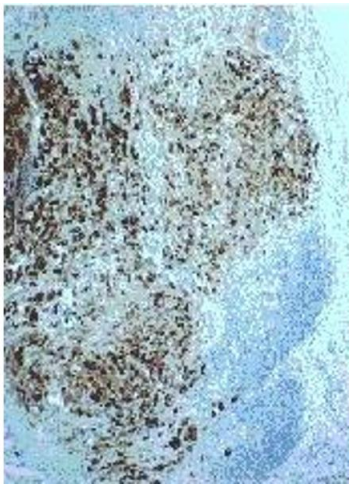
Storage: 4 °C/-20 °C

Storage Comment: Store the antibody undiluted at 2-8 °C for one month or (in aliquots) at -20 °C for longer. Avoid repeated freezing and thawing.

Shelf life: one year from despatch.

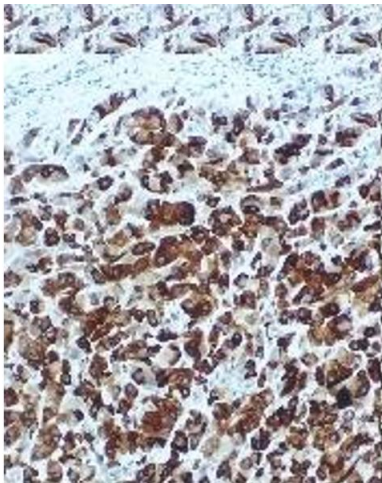
Expiry Date: 12 months

Images



Immunohistochemistry

Image 1.



Immunohistochemistry

Image 2.