

Datasheet for ABIN452762  
**anti-ARPC1A antibody (C-Term)**[Go to Product page](#)

## 2 Images

## Overview

Quantity:	0.4 mL
Target:	ARPC1A
Binding Specificity:	C-Term
Reactivity:	Human
Host:	Rabbit
Clonality:	Polyclonal
Application:	Western Blotting (WB), Immunohistochemistry (Paraffin-embedded Sections) (IHC (p)), Enzyme Immunoassay (EIA)

## Product Details

Immunogen:	KLH conjugated synthetic peptide selected from the C-terminal region of human ARPC1A
Specificity:	This antibody detects ARPC1A / SOP2L at C-term.
Cross-Reactivity (Details):	Species reactivity (tested):Human
Purification:	Prepared by Saturated Ammonium Sulfate (SAS) precipitation followed by dialysis against PBS

## Target Details

Target:	ARPC1A
Alternative Name:	ARPC1A / SOP2L ( <a href="#">ARPC1A Products</a> )
Background:	ARPC1A is one of seven subunits of the human Arp2/3 protein complex. This subunit is a member of the SOP2 family of proteins and is most similar to the protein ARPC1B. The similarity between these two proteins suggests that they both may function as p41 subunit of

## Target Details

the human Arp2/3 complex that has been implicated in the control of actin polymerization in cells. It is possible that the p41 subunit is involved in assembling and maintaining the structure of the Arp2/3 complex. Multiple versions of the p41 subunit may adapt the functions of the complex to different cell types or developmental stages. Synonyms: Actin-related protein 2/3 complex subunit 1A, SOP2-like protein

Molecular Weight: 41569 Da

Gene ID: 10552

NCBI Accession: [NP\\_006400](#)

UniProt: [Q92747](#)

Pathways: [Regulation of Actin Filament Polymerization](#)

## Application Details

Application Notes: Western blot: 1: 50 - 1: 100. ELISA: 1: 1,000. Immunohistochemistry on paraffin sections 1: 50 - 1: 100.

Other applications not tested.

Optimal dilutions are dependent on conditions and should be determined by the user.

Restrictions: For Research Use only

## Handling

Format: Liquid

Concentration: 0.25 mg/mL

Buffer: PBS with 0.09 % (W/V) sodium azide

Preservative: Sodium azide

Precaution of Use: This product contains sodium azide: a POISONOUS AND HAZARDOUS SUBSTANCE which should be handled by trained staff only.

Handling Advice: Avoid repeated freezing and thawing.

Storage: 4 °C/-20 °C

Storage Comment: Store the antibody at 2 - 8 °C up to one month or (in aliquots) at -20 °C for longer.

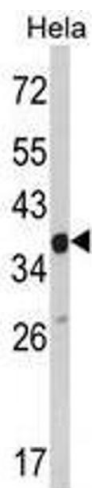


Image 1.



Image 2.