



[Go to Product page](#)

Datasheet for ABIN452791  
**anti-C6 antibody (N-Term)**

1 Image

### Overview

Quantity:	0.4 mL
Target:	C6
Binding Specificity:	N-Term
Reactivity:	Human
Host:	Rabbit
Clonality:	Polyclonal
Conjugate:	This C6 antibody is un-conjugated
Application:	Western Blotting (WB), Enzyme Immunoassay (EIA)

### Product Details

Immunogen:	KLH conjugated synthetic peptide selected from the N-terminal region of human C6
Specificity:	This antibody detects Complement C6 at N-term.
Cross-Reactivity (Details):	Species reactivity (tested):Human
Purification:	Purified through a protein A column, followed by peptide affinity purification

### Target Details

Target:	C6
Alternative Name:	Complement C6 ( <a href="#">C6 Products</a> )
Background:	C6 is a component of complement cascade. It is part of the membrane attack complex which can insert into the cell membrane and cause cell to lyse. People with C6 deficiency are prone to

## Target Details

---

bacterial infection.

Molecular Weight: 104786 Da

Gene ID: 729

NCBI Accession: [NP\\_000056](#)

UniProt: [P13671](#)

## Application Details

---

Application Notes: Western blot: 1: 100 - 1: 500. ELISA: 1: 1,000.  
Other applications not tested.  
Optimal dilutions are dependent on conditions and should be determined by the user.

Restrictions: For Research Use only

## Handling

---

Format: Liquid

Concentration: 0.25 mg/mL

Buffer: PBS with 0.09 % (W/V) sodium azide

Preservative: Sodium azide

Precaution of Use: This product contains sodium azide: a POISONOUS AND HAZARDOUS SUBSTANCE which should be handled by trained staff only.

Handling Advice: Avoid repeated freezing and thawing.

Storage: 4 °C/-20 °C

Storage Comment: Store the antibody at 2 - 8 °C up to one month or (in aliquots) at -20 °C for longer.

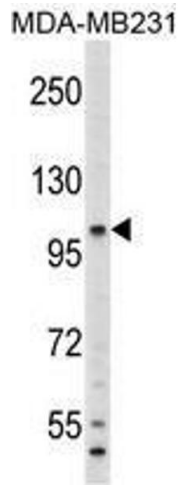


Image 1.