



[Go to Product page](#)

Datasheet for ABIN452826

anti-CCRN4L antibody (C-Term)

1 Image

Overview

Quantity:	0.4 mL
Target:	CCRN4L
Binding Specificity:	C-Term
Reactivity:	Human
Host:	Rabbit
Clonality:	Polyclonal
Application:	Western Blotting (WB), Enzyme Immunoassay (EIA)

Product Details

Immunogen:	KLH conjugated synthetic peptide selected from the C-terminal region of human CCRN4L
Specificity:	This antibody detects Nocturnin at C-term.
Cross-Reactivity (Details):	Species reactivity (tested):Human
Purification:	Prepared by Saturated Ammonium Sulfate (SAS) precipitation followed by dialysis against PBS

Target Details

Target:	CCRN4L
Alternative Name:	Nocturnin (CCRN4L Products)
Background:	CCRN4L is highly similar to Nocturnin, identified as a circadian clock regulated gene in <i>Xenopus laevis</i> . This protein and Nocturnin protein share similarity with the C-terminal domain of a yeast transcription factor, carbon catabolite repression 4 (CCR4). Synonyms: CCR4, CCR4 protein homolog, CCRN4L, NOC

Target Details

Molecular Weight:	48196 Da
Gene ID:	25819
NCBI Accession:	NP_036250
UniProt:	Q9UK39
Pathways:	Ribonucleoprotein Complex Subunit Organization

Application Details

Application Notes:	Western blot: 1: 50 - 1: 100. ELISA: 1: 1,000. Other applications not tested. Optimal dilutions are dependent on conditions and should be determined by the user.
Restrictions:	For Research Use only

Handling

Format:	Liquid
Concentration:	0.25 mg/mL
Buffer:	PBS with 0.09 % (W/V) sodium azide
Preservative:	Sodium azide
Precaution of Use:	This product contains sodium azide: a POISONOUS AND HAZARDOUS SUBSTANCE which should be handled by trained staff only.
Handling Advice:	Avoid repeated freezing and thawing.
Storage:	4 °C/-20 °C
Storage Comment:	Store the antibody at 2 - 8 °C up to one month or (in aliquots) at -20 °C for longer.

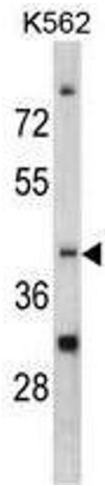


Image 1.