

Datasheet for ABIN452837
anti-CER1 antibody (N-Term)[Go to Product page](#)

1 Image

Overview

Quantity:	0.4 mL
Target:	CER1
Binding Specificity:	N-Term
Reactivity:	Human
Host:	Rabbit
Clonality:	Polyclonal
Application:	Western Blotting (WB), Enzyme Immunoassay (EIA)

Product Details

Immunogen:	KLH conjugated synthetic peptide selected from the N-terminal region of human CER1
Specificity:	This antibody detects CER1 at N-term.
Cross-Reactivity (Details):	Species reactivity (tested):Human
Purification:	Prepared by Saturated Ammonium Sulfate (SAS) precipitation followed by dialysis against PBS

Target Details

Target:	CER1
Alternative Name:	Cerberus (CER1 Products)
Background:	CER1 is a cytokine member of the cysteine knot superfamily, characterized by nine conserved cysteines and a cysteine knot region. The cerberus-related cytokines, together with Dan and DRM/Gremlin, represent a group of bone morphogenetic protein (BMP) antagonists that can bind directly to BMPs and inhibit their activity.Synonyms: CER1, Cerberus-related protein, DAN

Target Details

	domain family member 4, DAND4
Molecular Weight:	30084 Da
Gene ID:	9350
NCBI Accession:	NP_005445
UniProt:	O95813
Pathways:	Maintenance of Protein Location

Application Details

Application Notes:	Western blot: 1: 50 - 1: 100. ELISA: 1: 1,000. Other applications not tested. Optimal dilutions are dependent on conditions and should be determined by the user.
Restrictions:	For Research Use only

Handling

Format:	Liquid
Concentration:	0.25 mg/mL
Buffer:	PBS with 0.09 % (W/V) sodium azide
Preservative:	Sodium azide
Precaution of Use:	This product contains sodium azide: a POISONOUS AND HAZARDOUS SUBSTANCE which should be handled by trained staff only.
Handling Advice:	Avoid repeated freezing and thawing.
Storage:	4 °C/-20 °C
Storage Comment:	Store the antibody at 2 - 8 °C up to one month or (in aliquots) at -20 °C for longer.

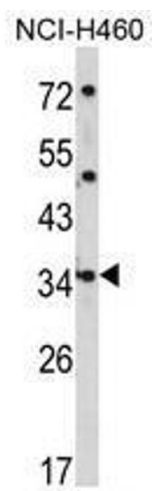


Image 1.