

Datasheet for ABIN452843

anti-RCBTB2 antibody (N-Term)**1** Image[Go to Product page](#)

Overview

Quantity:	0.4 mL
Target:	RCBTB2
Binding Specificity:	N-Term
Reactivity:	Human
Host:	Rabbit
Clonality:	Polyclonal
Conjugate:	This RCBTB2 antibody is un-conjugated
Application:	Western Blotting (WB), Enzyme Immunoassay (EIA)

Product Details

Immunogen:	KLH conjugated synthetic peptide selected from the N-terminal region of human CHC1L
Specificity:	This antibody detects CHC1L at N-term.
Cross-Reactivity (Details):	Species reactivity (tested):Human
Purification:	Prepared by Saturated Ammonium Sulfate (SAS) precipitation followed by dialysis against PBS

Target Details

Target:	RCBTB2
Alternative Name:	RCBTB2 / CHC1L (RCBTB2 Products)
Background:	RCBTB2 is a member of the RCC1-related GEF family. The N-terminal half of the amino acid sequence shows similarity to the regulator of chromosome condensation RCC1, which acts as

Target Details

	a guanine nucleotide exchange factor (GEF) protein for the Ras-related GTPase Ran.Synonyms: Chromosome condensation 1-like, RCC1 and BTB domain-containing protein 2, RCC1-like G exchanging factor, RLG, Regulator of chromosome condensation and BTB domain-containing protein 2
Molecular Weight:	60315 Da
Gene ID:	1102
NCBI Accession:	NP_001259
UniProt:	O95199

Application Details

Application Notes:	Western blot: 1: 50 - 1: 100. ELISA: 1: 1,000. Other applications not tested. Optimal dilutions are dependent on conditions and should be determined by the user.
Restrictions:	For Research Use only

Handling

Format:	Liquid
Concentration:	0.25 mg/mL
Buffer:	PBS with 0.09 % (W/V) sodium azide
Preservative:	Sodium azide
Precaution of Use:	This product contains sodium azide: a POISONOUS AND HAZARDOUS SUBSTANCE which should be handled by trained staff only.
Handling Advice:	Avoid repeated freezing and thawing.
Storage:	4 °C/-20 °C
Storage Comment:	Store the antibody at 2 - 8 °C up to one month or (in aliquots) at -20 °C for longer.

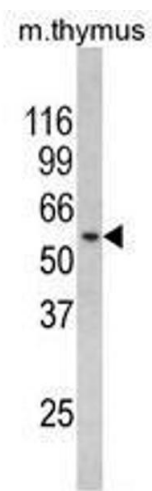


Image 1.