

Datasheet for ABIN452846

anti-CLEC16A antibody (C-Term)[Go to Product page](#)**1** Image

Overview

Quantity:	0.4 mL
Target:	CLEC16A
Binding Specificity:	C-Term
Reactivity:	Human
Host:	Rabbit
Clonality:	Polyclonal
Conjugate:	This CLEC16A antibody is un-conjugated
Application:	Western Blotting (WB), Enzyme Immunoassay (EIA)

Product Details

Immunogen:	KLH conjugated synthetic peptide selected from the C-terminal region of human CLEC16A
Specificity:	This antibody detects CLEC16A at Center.
Cross-Reactivity (Details):	Species reactivity (tested):Human
Purification:	Purified through a protein A column, followed by peptide affinity purificatio

Target Details

Target:	CLEC16A
Alternative Name:	CLEC16A (CLEC16A Products)
Background:	CLEC16A is almost exclusively expressed in immune cells, including dendritic cells, B lymphocytes and natural killer cells. There are three isoforms.Synonyms: CLEC16A, KIAA0350

Target Details

Molecular Weight:	117715 Da
Gene ID:	23274
NCBI Accession:	NP_056041
UniProt:	Q2KHT3

Application Details

Application Notes:	Western blot: 1: 100 - 1: 500. ELISA: 1: 1,000. Other applications not tested. Optimal dilutions are dependent on conditions and should be determined by the user.
Restrictions:	For Research Use only

Handling

Format:	Liquid
Concentration:	0.25 mg/mL
Buffer:	PBS with 0.09 % (W/V) sodium azide
Preservative:	Sodium azide
Precaution of Use:	This product contains sodium azide: a POISONOUS AND HAZARDOUS SUBSTANCE which should be handled by trained staff only.
Handling Advice:	Avoid repeated freezing and thawing.
Storage:	4 °C/-20 °C
Storage Comment:	Store the antibody at 2 - 8 °C up to one month or (in aliquots) at -20 °C for longer.

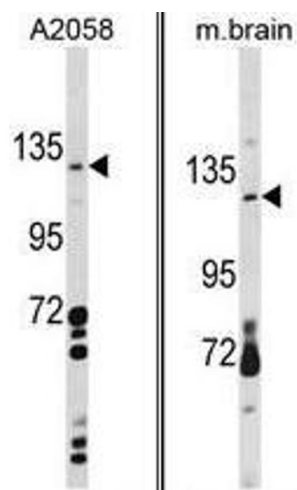


Image 1.