

Datasheet for ABIN452856

**anti-COL6 antibody (C-Term, Chain alpha 1)**[Go to Product page](#)**1** Image

## Overview

Quantity:	0.4 mL
Target:	COL6
Binding Specificity:	C-Term, Chain alpha 1
Reactivity:	Human
Host:	Rabbit
Clonality:	Polyclonal
Conjugate:	This COL6 antibody is un-conjugated
Application:	Western Blotting (WB), Enzyme Immunoassay (EIA)

## Product Details

Immunogen:	KLH conjugated synthetic peptide selected from the C-terminal region of human COL6A1
Specificity:	This antibody detects COL6A1 at C-term.
Cross-Reactivity (Details):	Species reactivity (tested):Human
Purification:	Prepared by Saturated Ammonium Sulfate (SAS) precipitation followed by dialysis against PBS

## Target Details

Target:	COL6
Abstract:	<a href="#">COL6 Products</a>
Background:	The collagens are a superfamily of proteins that play a role in maintaining the integrity of various tissues. Collagens are extracellular matrix proteins and have a triple-helical domain as

## Target Details

their common structural element. Collagen VI is a major structural component of microfibrils. The basic structural unit of collagen VI is a heterotrimer of the alpha1(VI), alpha2(VI), and alpha3(VI) chains. The protein COL6A1 is the alpha 1 subunit of type VI collagen (alpha1(VI) chain). Mutations in the genes that code for the collagen VI subunits result in the autosomal dominant disorder, Bethlem myopathy. Synonyms: COL6A1

Molecular Weight: 108529 Da

Gene ID: 1291

NCBI Accession: [NP\\_001839](#)

UniProt: [P12109](#)

## Application Details

Application Notes: Western blot: 1: 50 - 1: 100. ELISA: 1: 1,000.  
Other applications not tested.  
Optimal dilutions are dependent on conditions and should be determined by the user.

Restrictions: For Research Use only

## Handling

Format: Liquid

Concentration: 0.25 mg/mL

Buffer: PBS with 0.09 % (W/V) sodium azide

Preservative: Sodium azide

Precaution of Use: This product contains sodium azide: a POISONOUS AND HAZARDOUS SUBSTANCE which should be handled by trained staff only.

Handling Advice: Avoid repeated freezing and thawing.

Storage: 4 °C/-20 °C

Storage Comment: Store the antibody at 2 - 8 °C up to one month or (in aliquots) at -20 °C for longer.

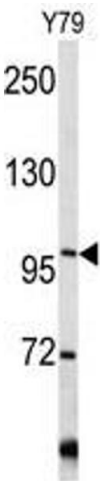


Image 1.