

Datasheet for ABIN452873
anti-CRAT antibody (N-Term)



[Go to Product page](#)

1 Image

Overview

Quantity:	0.4 mL
Target:	CRAT
Binding Specificity:	N-Term
Reactivity:	Human
Host:	Rabbit
Clonality:	Polyclonal
Conjugate:	This CRAT antibody is un-conjugated
Application:	Western Blotting (WB), Enzyme Immunoassay (EIA)

Product Details

Immunogen:	KLH conjugated synthetic peptide selected from the N-terminal region of human CRAT
Specificity:	This antibody detects CRAT at N-term.
Cross-Reactivity (Details):	Species reactivity (tested):Human
Purification:	Prepared by Saturated Ammonium Sulfate (SAS) precipitation followed by dialysis against PBS

Target Details

Target:	CRAT
Alternative Name:	CRAT (CRAT Products)
Background:	CRAT is carnitine acetyltransferase (CRAT), which is a key enzyme in the metabolic pathway in mitochondria, peroxisomes and endoplasmic reticulum. CRAT catalyzes the reversible transfer

Target Details

	of acyl groups from an acyl-CoA thioester to carnitine and regulates the ratio of acylCoA/CoA in the subcellular compartments.Synonyms: CAT1, Carnitine O-acetyltransferase, Carnitine acetylase, Carnitine acetyltransferase
Molecular Weight:	70858 Da
Gene ID:	1384
NCBI Accession:	NP_000746
UniProt:	P43155
Pathways:	Monocarboxylic Acid Catabolic Process

Application Details

Application Notes:	Western blot: 1: 50 - 1: 100. ELISA: 1: 1,000. Other applications not tested. Optimal dilutions are dependent on conditions and should be determined by the user.
Restrictions:	For Research Use only

Handling

Format:	Liquid
Concentration:	0.25 mg/mL
Buffer:	PBS with 0.09 % (W/V) sodium azide
Preservative:	Sodium azide
Precaution of Use:	This product contains sodium azide: a POISONOUS AND HAZARDOUS SUBSTANCE which should be handled by trained staff only.
Handling Advice:	Avoid repeated freezing and thawing.
Storage:	4 °C/-20 °C
Storage Comment:	Store the antibody at 2 - 8 °C up to one month or (in aliquots) at -20 °C for longer.

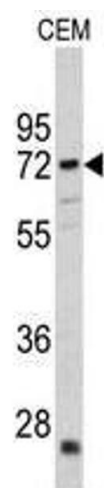


Image 1.