

Datasheet for ABIN452874  
**anti-CREB3L1 antibody (C-Term)**

## 3 Images

[Go to Product page](#)

## Overview

Quantity:	0.4 mL
Target:	CREB3L1
Binding Specificity:	AA 488-517, C-Term
Reactivity:	Human, Mouse
Host:	Rabbit
Clonality:	Polyclonal
Conjugate:	This CREB3L1 antibody is un-conjugated
Application:	Western Blotting (WB), Immunohistochemistry (Paraffin-embedded Sections) (IHC (p)), Flow Cytometry (FACS), Enzyme Immunoassay (EIA)

## Product Details

Immunogen:	KLH conjugated synthetic peptide between 488~517 amino acids from the C-terminal region of Human CREB3L1
Specificity:	This antibody detects CREB3L1 / OASIS at C-term.
Cross-Reactivity (Details):	Species reactivity (tested): Human, Mouse.
Purification:	Prepared by Saturated Ammonium Sulfate (SAS) precipitation followed by dialysis against PBS.

## Target Details

Target:	CREB3L1
Alternative Name:	CREB3L1 / OASIS ( <a href="#">CREB3L1 Products</a> )

## Target Details

Background:	CREB3L1 is a transcription factor that acts during endoplasmic reticulum stress by activating unfolded protein response target genes. It is specifically involved in ER-stress response in astrocytes in the central nervous system (By similarity). It may play a role in gliosis. In vitro, it binds to box-B element, cAMP response element (CRE) and CRE-like sequences, and activates transcription through box-B element but not through CRE. Synonyms: Cyclic AMP-responsive element-binding protein 3-like protein 1, Old astrocyte specifically-induced, PSEC0238, cAMP-responsive element-binding protein 3-like protein 1
Molecular Weight:	57005 Da
Gene ID:	90993
NCBI Accession:	<a href="#">NP_443086</a>
UniProt:	<a href="#">Q96BA8</a>
Pathways:	<a href="#">Thyroid Hormone Synthesis</a> , <a href="#">Chromatin Binding</a>

## Application Details

Application Notes:	ELISA: 1/1,000. Western blot: 1/50-1/100. Flow cytometry: 1/10-1/50. Immunohistochemistry: 1/50-1/100. Other applications not tested. Optimal dilutions are dependent on conditions and should be determined by the user.
Restrictions:	For Research Use only

## Handling

Format:	Liquid
Concentration:	0.25 mg/mL
Buffer:	PBS with 0.09 % (W/V) Sodium Azide as preservative
Preservative:	Sodium azide
Precaution of Use:	This product contains sodium azide: a POISONOUS AND HAZARDOUS SUBSTANCE which should be handled by trained staff only.
Handling Advice:	Avoid repeated freezing and thawing.
Storage:	4 °C/-20 °C
Storage Comment:	Store the antibody undiluted at 2-8 °C for one month or (in aliquots) at -20 °C for longer.

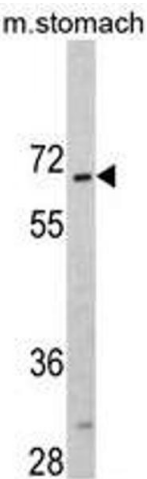


Image 1.

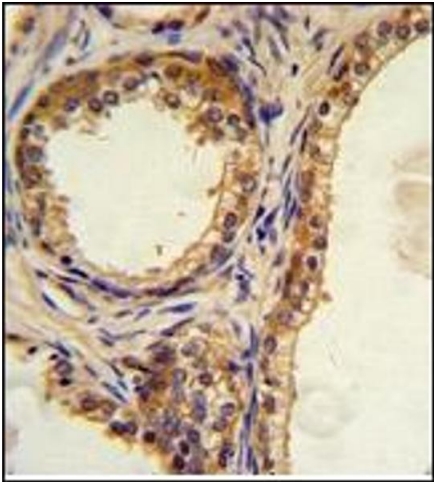


Image 2.

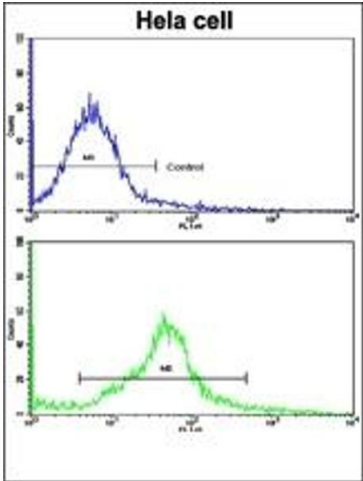


Image 3.