

Datasheet for ABIN452890  
**anti-Cathepsin H antibody (N-Term)**

## 3 Images

[Go to Product page](#)

## Overview

Quantity:	0.4 mL
Target:	Cathepsin H (CTSH)
Binding Specificity:	AA 32-62, N-Term
Reactivity:	Human
Host:	Rabbit
Clonality:	Polyclonal
Conjugate:	This Cathepsin H antibody is un-conjugated
Application:	Western Blotting (WB), Immunohistochemistry (Paraffin-embedded Sections) (IHC (p)), Flow Cytometry (FACS), Enzyme Immunoassay (EIA)

## Product Details

Immunogen:	KLH conjugated synthetic peptide between 32~62 amino acids from the N-terminal region of human CTSH
Specificity:	This antibody detects Human Cathepsin H at N-term.
Purification:	Prepared by Saturated Ammonium Sulfate (SAS) precipitation followed by dialysis against PBS

## Target Details

Target:	Cathepsin H (CTSH)
Alternative Name:	Cathepsin H ( <a href="#">CTSH Products</a> )
Background:	The protein is a lysosomal cysteine proteinase important in the overall degradation of lysosomal proteins. It is composed of a dimer of disulfide-linked heavy and light chains, both

## Target Details

produced from a single protein precursor. The protein, which belongs to the peptidase C1 protein family, can act both as an aminopeptidase and as an endopeptidase. Increased expression of its gene has been correlated with malignant progression of prostate tumors. Synonyms: CPSB, CTSH, Cathepsin B3

Molecular Weight: 37378 Da

Gene ID: 1512

NCBI Accession: [NP\\_004381](#)

UniProt: [P09668](#)

Pathways: [Positive Regulation of Endopeptidase Activity](#)

## Application Details

Application Notes: Western blot: 1: 50 - 1: 100. ELISA: 1: 1,000.  
Other applications not tested.  
Optimal dilutions are dependent on conditions and should be determined by the user.

Restrictions: For Research Use only

## Handling

Format: Liquid

Concentration: 0.25 mg/mL

Buffer: PBS containing 0.09 % (W/V) Sodium Azide as preservative

Preservative: Sodium azide

Precaution of Use: This product contains sodium azide: a POISONOUS AND HAZARDOUS SUBSTANCE which should be handled by trained staff only.

Handling Advice: Avoid repeated freezing and thawing.

Storage: 4 °C/-20 °C

Storage Comment: Store undiluted at 2-8 °C for one month or (in aliquots) at -20 °C for longer.

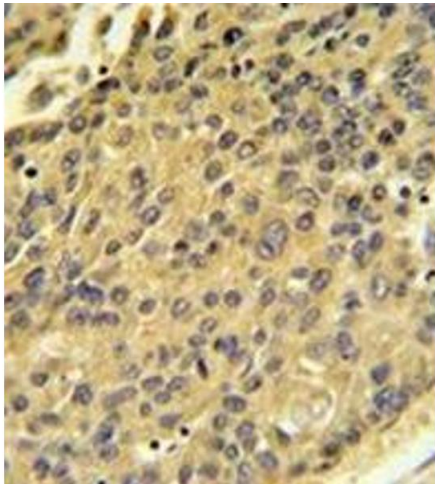


Image 1.

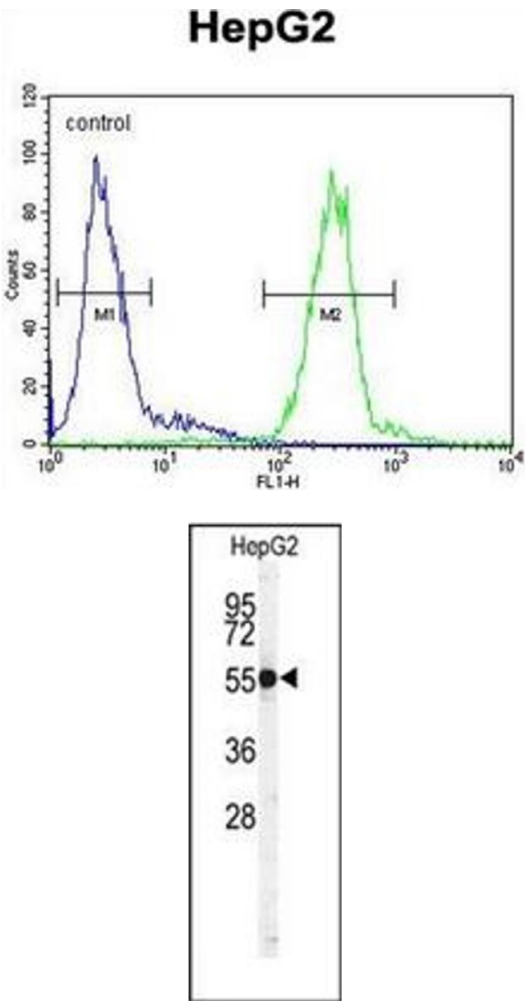


Image 2.

Image 3.