

Datasheet for ABIN452902

anti-DCL1 antibody (Middle Region)[Go to Product page](#)**1** Image

Overview

Quantity:	0.4 mL
Target:	DCL1 (CD302)
Binding Specificity:	Middle Region
Reactivity:	Human, Mouse
Host:	Rabbit
Clonality:	Polyclonal
Conjugate:	This DCL1 antibody is un-conjugated
Application:	Western Blotting (WB), Enzyme Immunoassay (EIA)

Product Details

Immunogen:	KLH conjugated synthetic peptide selected from the Center region of human CD302
Specificity:	This antibody detects CD302 / DCL1 at Center.
Cross-Reactivity (Details):	Species reactivity (tested): Human, Mouse
Purification:	Purified through a protein A column, followed by peptide affinity purification

Target Details

Target:	DCL1 (CD302)
Alternative Name:	CD302 / DCL1 (CD302 Products)
Background:	CD302 is a C-type lectin receptor involved in cell adhesion and migration, as well as endocytosis and phagocytosis. Synonyms: C-type lectin BIMLEC, C-type lectin domain family 13

Target Details

	member A, CLEC13A, DCL-1, KIAA0022, Type I transmembrane C-type lectin receptor DCL-1
Molecular Weight:	26183 Da
Gene ID:	9936
NCBI Accession:	NP_055695
UniProt:	Q8IX05
Pathways:	Regulation of Actin Filament Polymerization

Application Details

Application Notes:	Western blot: 1: 100 - 1: 500. ELISA: 1: 1,000. Other applications not tested. Optimal dilutions are dependent on conditions and should be determined by the user.
Restrictions:	For Research Use only

Handling

Format:	Liquid
Concentration:	0.25 mg/mL
Buffer:	PBS with 0.09 % (W/V) sodium azide
Preservative:	Sodium azide
Precaution of Use:	This product contains sodium azide: a POISONOUS AND HAZARDOUS SUBSTANCE which should be handled by trained staff only.
Handling Advice:	Avoid repeated freezing and thawing.
Storage:	4 °C/-20 °C
Storage Comment:	Store the antibody at 2 - 8 °C up to one month or (in aliquots) at -20 °C for longer.

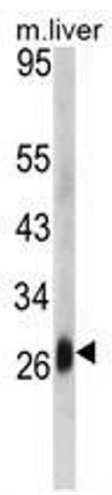


Image 1.