

Datasheet for ABIN452972

**anti-EPS8-Like 3 antibody (N-Term)**[Go to Product page](#)**1** Image

## Overview

Quantity:	0.4 mL
Target:	EPS8-Like 3 (EPS8L3)
Binding Specificity:	N-Term
Reactivity:	Human
Host:	Rabbit
Clonality:	Polyclonal
Conjugate:	This EPS8-Like 3 antibody is un-conjugated
Application:	Western Blotting (WB), Enzyme Immunoassay (EIA)

## Product Details

Immunogen:	KLH conjugated synthetic peptide selected from the N-terminal region of human EPS8L3
Specificity:	This antibody detects EPS8L3 at N-term.
Cross-Reactivity (Details):	Species reactivity (tested):Human
Purification:	Purified through a protein A column, followed by peptide affinity purification

## Target Details

Target:	EPS8-Like 3 (EPS8L3)
Alternative Name:	EPS8L3 ( <a href="#">EPS8L3 Products</a> )
Background:	EPS8L3 is related to epidermal growth factor receptor pathway substrate 8 (EPS8), a substrate for the epidermal growth factor receptor. The function of this protein is unknown.Synonyms:

## Target Details

	EPS8-like protein 3, EPS8R3, Epidermal growth factor receptor kinase substrate 8-like protein 3, Epidermal growth factor receptor pathway substrate 8-related protein 3
Molecular Weight:	66861 Da
Gene ID:	79574
NCBI Accession:	<a href="#">NP_078802</a>
UniProt:	<a href="#">Q8TE67</a>

## Application Details

Application Notes:	Western blot: 1: 100 - 1: 500. ELISA: 1: 1,000. Other applications not tested. Optimal dilutions are dependent on conditions and should be determined by the user.
Restrictions:	For Research Use only

## Handling

Format:	Liquid
Concentration:	0.25 mg/mL
Buffer:	PBS with 0.09 % (W/V) sodium azide
Preservative:	Sodium azide
Precaution of Use:	This product contains sodium azide: a POISONOUS AND HAZARDOUS SUBSTANCE which should be handled by trained staff only.
Handling Advice:	Avoid repeated freezing and thawing.
Storage:	4 °C/-20 °C
Storage Comment:	Store the antibody at 2 - 8 °C up to one month or (in aliquots) at -20 °C for longer.

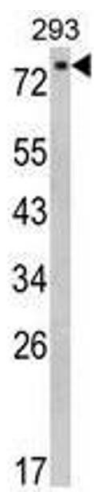


Image 1.