



[Go to Product page](#)

Datasheet for ABIN452983
anti-ETV4 antibody (C-Term)

3 Images

Overview

Quantity:	0.4 mL
Target:	ETV4
Binding Specificity:	AA 426-455, C-Term
Reactivity:	Human, Mouse
Host:	Rabbit
Clonality:	Polyclonal
Conjugate:	This ETV4 antibody is un-conjugated
Application:	Western Blotting (WB), Immunohistochemistry (Paraffin-embedded Sections) (IHC (p)), Flow Cytometry (FACS), Enzyme Immunoassay (EIA)

Product Details

Immunogen:	KLH conjugated synthetic peptide between 426~455 amino acids from the C-terminal region of Human ETV4. Genename: ETV4
Specificity:	This antibody detects ETV4 at C-term.
Cross-Reactivity (Details):	Species reactivity (tested):Human, Mouse.
Purification:	Prepared by Saturated Ammonium Sulfate (SAS) precipitation followed by dialysis against PBS

Target Details

Target:	ETV4
Alternative Name:	ETV4 / PEA3 (ETV4 Products)

Target Details

Background:	ETV4 is a transcriptional activator that binds to the enhancer of the adenovirus E1A gene, the core-binding sequence is 5'[AC]GGA[AT]GT-3'.Synonyms: Adenovirus E1A enhancer-binding protein, E1A-F, E1AF, ETS translocation variant 4, Polyomavirus enhancer activator 3 homolog
Molecular Weight:	53938 Da
Gene ID:	2118
NCBI Accession:	NP_001073143
UniProt:	P43268

Application Details

Application Notes:	Western blot: 1: 50 - 1: 100. ELISA: 1: 1,000. Other applications not tested. Optimal dilutions are dependent on conditions and should be determined by the user.
Restrictions:	For Research Use only

Handling

Format:	Liquid
Concentration:	0.25 mg/mL
Buffer:	PBS, 0.09 % Sodium Azide
Preservative:	Sodium azide
Precaution of Use:	This product contains sodium azide: a POISONOUS AND HAZARDOUS SUBSTANCE which should be handled by trained staff only.
Handling Advice:	Avoid repeated freezing and thawing.
Storage:	4 °C/-20 °C
Storage Comment:	Store undiluted at 2-8 °C for one month or (in aliquots) at -20 °C for longer.

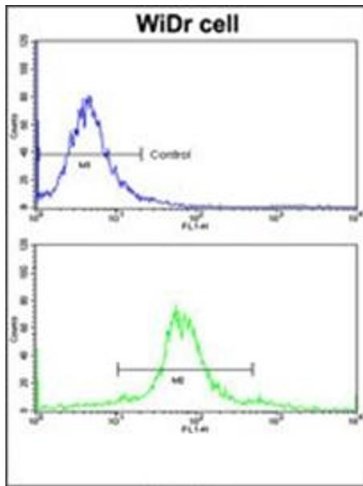


Image 1.

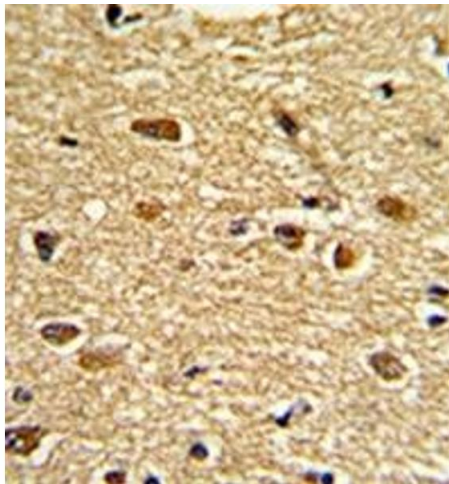


Image 2.

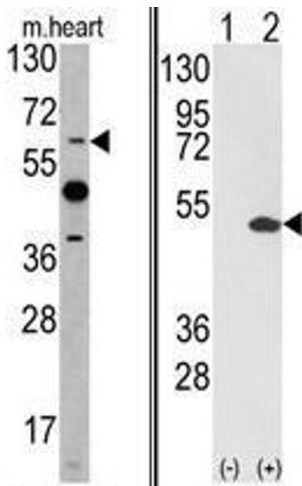


Image 3.