



[Go to Product page](#)

Datasheet for ABIN453008
anti-FKBP10 antibody (N-Term)

2 Images

Overview

Quantity:	0.4 mL
Target:	FKBP10
Binding Specificity:	AA 65-94, N-Term
Reactivity:	Human, Mouse
Host:	Rabbit
Clonality:	Polyclonal
Application:	Western Blotting (WB), Flow Cytometry (FACS), Immunohistochemistry (Paraffin-embedded Sections) (IHC (p)), Enzyme Immunoassay (EIA)

Product Details

Immunogen:	KLH conjugated synthetic peptide between 65~94 amino acids from the N-terminal region of human FKBP10.
Specificity:	This antibody detects Human and Mouse FKBP10 at N-term.
Purification:	Protein A column, followed by peptide affinity purification

Target Details

Target:	FKBP10
Alternative Name:	FKBP10 / FKBP65 (FKBP10 Products)
Background:	The protein belongs to the FKBP-type peptidyl-prolyl cis/trans isomerase family. It is located in endoplasmic reticulum and acts as molecular chaperones. Synonyms: 65 kDa FK506-binding protein, FK506-binding protein 10, Immunophilin FKBP65, PPIase FKBP10, Peptidyl-prolyl cis-

Target Details

trans isomerase FKBP10, Rotamase

Molecular Weight: 64245 Da

Gene ID: 60681

NCBI Accession: [NP_068758](#)

UniProt: [Q96AY3](#)

Pathways: [SARS-CoV-2 Protein Interactome](#)

Application Details

Application Notes: Western blot: 1: 100 - 1: 500. ELISA: 1: 1,000.
Other applications not tested.
Optimal dilutions are dependent on conditions and should be determined by the user.

Restrictions: For Research Use only

Handling

Format: Liquid

Concentration: 0.25 mg/mL

Buffer: PBS containing 0.09 % (W/V) Sodium Azide as preservative

Preservative: Sodium azide

Precaution of Use: This product contains sodium azide: a POISONOUS AND HAZARDOUS SUBSTANCE which should be handled by trained staff only.

Handling Advice: Avoid repeated freezing and thawing.

Storage: 4 °C/-20 °C

Storage Comment: Store undiluted at 2-8 °C for one month or (in aliquots) at -20 °C for longer.

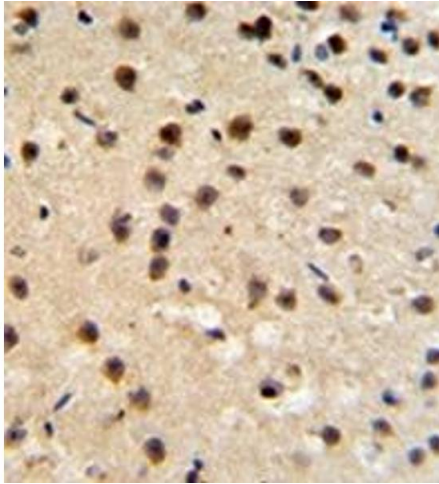


Image 1.

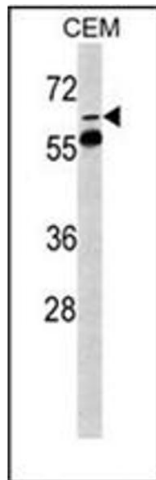


Image 2.