

Datasheet for ABIN453037
anti-FUT1 antibody (Middle Region)[Go to Product page](#)

1 Image

Overview

Quantity:	0.4 mL
Target:	FUT1
Binding Specificity:	Middle Region
Reactivity:	Human
Host:	Rabbit
Clonality:	Polyclonal
Conjugate:	This FUT1 antibody is un-conjugated
Application:	Western Blotting (WB), Enzyme Immunoassay (EIA)

Product Details

Immunogen:	KLH conjugated synthetic peptide selected from the Center region of human FUT1
Specificity:	This antibody detects FUT1 at Center.
Cross-Reactivity (Details):	Species reactivity (tested):Human
Purification:	Prepared by Saturated Ammonium Sulfate (SAS) precipitation followed by dialysis against PBS

Target Details

Target:	FUT1
Alternative Name:	Fucosyltransferase 1 (FUT1 Products)
Background:	FUT1 is a Golgi stack membrane protein that is involved in the creation of a precursor of the H antigen, which is required for the final step in the soluble A and B antigen synthesis

Target Details

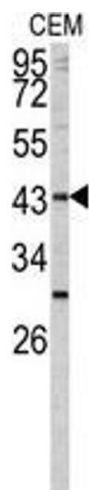
	pathway.Synonyms: 2)FT 1, Alpha(1, Blood group H alpha 2-fucosyltransferase, FUT1, GDP-L-fucose:beta-D-galactoside 2-alpha-L-fucosyltransferase 1, HSC
Molecular Weight:	41251 Da
Gene ID:	2523
NCBI Accession:	NP_000139
UniProt:	P19526

Application Details

Application Notes:	Western blot: 1: 50 - 1: 100. ELISA: 1: 1,000. Other applications not tested. Optimal dilutions are dependent on conditions and should be determined by the user.
Restrictions:	For Research Use only

Handling

Format:	Liquid
Concentration:	0.25 mg/mL
Buffer:	PBS with 0.09 % (W/V) sodium azide
Preservative:	Sodium azide
Precaution of Use:	This product contains sodium azide: a POISONOUS AND HAZARDOUS SUBSTANCE which should be handled by trained staff only.
Handling Advice:	Avoid repeated freezing and thawing.
Storage:	4 °C/-20 °C
Storage Comment:	Store the antibody at 2 - 8 °C up to one month or (in aliquots) at -20 °C for longer.



Western Blotting

Image 1. Western blot analysis of FUT1 antibody (Center) in CEM cell line lysates (35 µg/lane). FUT1 (arrow) was detected using the purified Pab.