

Datasheet for ABIN453043
anti-GALT antibody (C-Term)



[Go to Product page](#)

1 Image

Overview

Quantity:	0.4 mL
Target:	GALT
Binding Specificity:	C-Term
Reactivity:	Human
Host:	Rabbit
Clonality:	Polyclonal
Conjugate:	This GALT antibody is un-conjugated
Application:	Western Blotting (WB), Enzyme Immunoassay (EIA)

Product Details

Immunogen:	KLH conjugated synthetic peptide selected from the C-terminal region of human GALT
Specificity:	This antibody detects GALT at C-term.
Cross-Reactivity (Details):	Species reactivity (tested):Human
Purification:	Purified through a protein A column, followed by peptide affinity purification

Target Details

Target:	GALT
Alternative Name:	GALT (GALT Products)
Background:	Galactose-1-phosphate uridyl transferase (GALT) catalyzes the second step of the Leloir pathway of galactose metabolism, namely the conversion of UDP-glucose + galactose-1-

Target Details

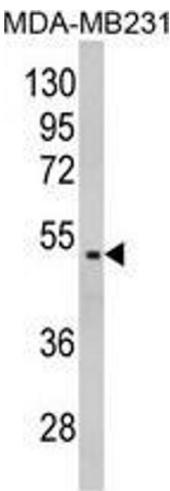
	phosphate to glucose-1-phosphate + UDP-galactose. The absence of this enzyme results in classic galactosemia in humans and can be fatal in the newborn period if lactose is not removed from the diet.Synonyms: Gal-1-P uridylyltransferase, Galactose-1-phosphate uridylyltransferase
Molecular Weight:	43363 Da
Gene ID:	2592
NCBI Accession:	NP_000146
UniProt:	P07902

Application Details

Application Notes:	Western blot: 1: 100 - 1: 500. ELISA: 1: 1,000. Other applications not tested. Optimal dilutions are dependent on conditions and should be determined by the user.
Restrictions:	For Research Use only

Handling

Format:	Liquid
Concentration:	0.25 mg/mL
Buffer:	PBS with 0.09 % (W/V) sodium azide
Preservative:	Sodium azide
Precaution of Use:	This product contains sodium azide: a POISONOUS AND HAZARDOUS SUBSTANCE which should be handled by trained staff only.
Handling Advice:	Avoid repeated freezing and thawing.
Storage:	4 °C/-20 °C
Storage Comment:	Store the antibody at 2 - 8 °C up to one month or (in aliquots) at -20 °C for longer.



Western Blotting

Image 1. Western blot analysis of GALT Antibody (C-term) in MDA-MB231 cell line lysates (35 µg/lane). GALT (arrow) was detected using the purified Pab.