

Datasheet for ABIN453052
anti-GGT5 antibody (N-Term)[Go to Product page](#)

1 Image

Overview

Quantity:	0.4 mL
Target:	GGT5
Binding Specificity:	N-Term
Reactivity:	Human, Mouse
Host:	Rabbit
Clonality:	Polyclonal
Conjugate:	This GGT5 antibody is un-conjugated
Application:	Western Blotting (WB), Enzyme Immunoassay (EIA)

Product Details

Immunogen:	KLH conjugated synthetic peptide selected from the N-terminal region of human GGTLA1
Specificity:	This antibody detects GGTLA1 at N-term.
Cross-Reactivity (Details):	Species reactivity (tested): Human, mouse
Purification:	Prepared by Saturated Ammonium Sulfate (SAS) precipitation followed by dialysis against PBS

Target Details

Target:	GGT5
Alternative Name:	GGT5 / GGTLA1 (GGT5 Products)
Background:	This gene is a member of gamma-glutamyl transpeptidase enzymes. This enzyme consists of a heavy and a light chain, and is able to hydrolyze the gamma-glutamyl moiety of glutathione. It

Target Details

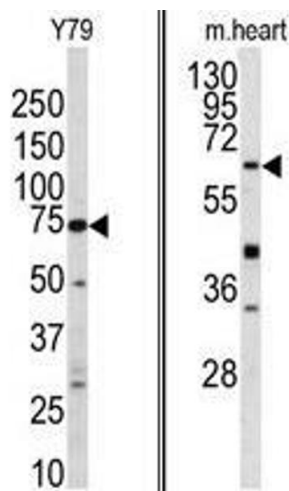
	converts leukotriene C4 to leukotriene D4, however, it doesn't convert synthetic substrates that are commonly used to assay gamma-glutamyl transpeptidase.Synonyms: Gamma-glutamyl transpeptidase-related enzyme, Gamma-glutamyltransferase 5, Gamma-glutamyltransferase-like activity 1, Gamma-glutamyltranspeptidase 5
Molecular Weight:	62261 Da
Gene ID:	2687
NCBI Accession:	NP_001093252
UniProt:	P36269

Application Details

Application Notes:	Western blot: 1: 50 - 1: 100. ELISA: 1: 1,000. Other applications not tested. Optimal dilutions are dependent on conditions and should be determined by the user.
Restrictions:	For Research Use only

Handling

Format:	Liquid
Concentration:	0.25 mg/mL
Buffer:	PBS with 0.09 % (W/V) sodium azide
Preservative:	Sodium azide
Precaution of Use:	This product contains sodium azide: a POISONOUS AND HAZARDOUS SUBSTANCE which should be handled by trained staff only.
Handling Advice:	Avoid repeated freezing and thawing.
Storage:	4 °C/-20 °C
Storage Comment:	Store the antibody at 2 - 8 °C up to one month or (in aliquots) at -20 °C for longer.



Western Blotting

Image 1. (LEFT) Western blot analysis of GGTLA1 antibody (N-term) in Y79 cell line lysates (35 µg/lane). GGTLA1 (arrow) was detected using the purified Pab. (RIGHT) Western blot analysis of GGTLA1 antibody (N-term) in mouse heart tissue lysates (35 µg/lane). GGTLA1 (arrow) was detected using the purified Pab.