



[Go to Product page](#)

Datasheet for ABIN453067
anti-GPD1 antibody (N-Term)

3 Images

Overview

Quantity:	0.4 mL
Target:	GPD1
Binding Specificity:	AA 35-65, N-Term
Reactivity:	Human, Mouse
Host:	Rabbit
Clonality:	Polyclonal
Application:	Western Blotting (WB), Flow Cytometry (FACS), Immunohistochemistry (Paraffin-embedded Sections) (IHC (p)), Enzyme Immunoassay (EIA)

Product Details

Immunogen:	KLH conjugated synthetic peptide between 35~65 amino acids from the N-terminal region of Human GPD1
Specificity:	This antibody detects GPD1 at N-term.
Cross-Reactivity (Details):	Species reactivity (tested):Human, Mouse.
Purification:	Affinity Chromatography on Protein A

Target Details

Target:	GPD1
Alternative Name:	GPD1 (GPD1 Products)
Background:	GRB14, GPD1, and GDF8 as potential network collaborators in weight loss-induced improvements in insulin action in human skeletal muscle.Synonyms: GPD-C, GPDC, GPDH-C,

Target Details

GPDHC, Glycerol-3-phosphate dehydrogenase, Glycerol-3-phosphate dehydrogenase [NAD+] cytoplasmic

Molecular Weight: 37568 Da

Gene ID: 2819

NCBI Accession: [NP_005267](#)

UniProt: [P21695](#)

Application Details

Application Notes: Western blot: 1: 100 - 1: 500. ELISA: 1: 1,000.
Other applications not tested.
Optimal dilutions are dependent on conditions and should be determined by the user.

Restrictions: For Research Use only

Handling

Format: Liquid

Concentration: 0.25 mg/mL

Buffer: PBS with 0.09 % (W/V) Sodium Azide as preservative

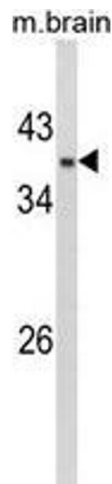
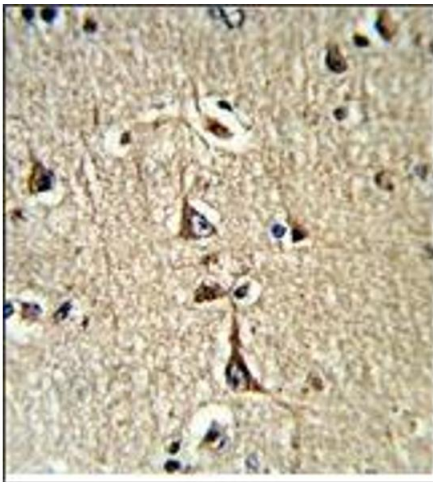
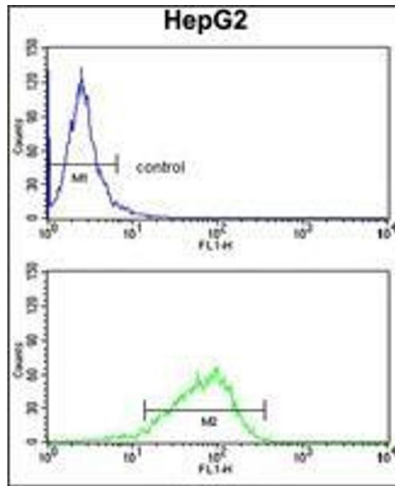
Preservative: Sodium azide

Precaution of Use: This product contains sodium azide: a POISONOUS AND HAZARDOUS SUBSTANCE which should be handled by trained staff only.

Handling Advice: Avoid repeated freezing and thawing.

Storage: 4 °C/-20 °C

Storage Comment: Store the antibody undiluted at 2-8 °C for one month or (in aliquots) at -20 °C for longer.



Flow Cytometry

Image 1. AP17436PU-N GPD1 Antibody (N-term) Flow Cytometry analysis of HepG2 cells (bottom histogram) compared to a negative control cell (top histogram). FITC-conjugated Goat-anti-Rabbit secondary antibodies were used for the analysis.

Immunohistochemistry (Paraffin-embedded Sections)

Image 2. AP17436PU-N GPD1 Antibody (N-term) staining of Formalin-Fixed, Paraffin-Embedded Human brain tissue using a peroxidase-conjugated to the secondary antibody, followed by DAB staining.

Western Blotting

Image 3. Western blot analysis of AP17436PU-N GPD1 Antibody (N-term) in Mouse brain tissue lysates (35 µg/lane). GPD1 (arrow) was detected using the purified Pab.