



[Go to Product page](#)

Datasheet for ABIN453142  
**anti-ITIH2 antibody (C-Term)**

1 Image

### Overview

Quantity:	0.4 mL
Target:	ITIH2
Binding Specificity:	C-Term
Reactivity:	Human
Host:	Rabbit
Clonality:	Polyclonal
Application:	Western Blotting (WB), Enzyme Immunoassay (EIA)

### Product Details

Immunogen:	KLH conjugated synthetic peptide selected from the C-terminal region of human ITIH2
Specificity:	This antibody reacts to ITIH2.
Purification:	Saturated Ammonium Sulfate (SAS) precipitation

### Target Details

Target:	ITIH2
Alternative Name:	ITIH2 ( <a href="#">ITIH2 Products</a> )
Background:	ITIH2 may act as a carrier of hyaluronan in serum or as a binding protein between hyaluronan and other matrix protein, including those on cell surfaces in tissues to regulate the localization, synthesis and degradation of hyaluronan which are essential to cells undergoing biological processes. Synonyms: IGHEP2, ITI heavy chain H2, ITI-HC2, Inter-alpha-inhibitor heavy chain 2, Inter-alpha-trypsin inhibitor heavy chain H2, SHAP, Serum-derived hyaluronan-associated

## Target Details

---

	protein
Gene ID:	3698
NCBI Accession:	<a href="#">NP_002207</a>
UniProt:	<a href="#">P19823</a>
Pathways:	<a href="#">Glycosaminoglycan Metabolic Process</a>

## Application Details

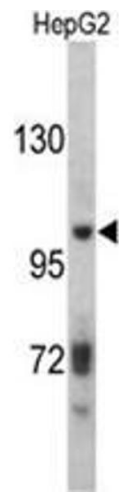
---

Application Notes:	ELISA: 1/1,000. Western blotting: 1/50 - 1/100. Other applications not tested. Optimal dilutions are dependent on conditions and should be determined by the user.
Restrictions:	For Research Use only

## Handling

---

Format:	Liquid
Concentration:	0.25 mg/mL
Buffer:	PBS with 0.09 % (W/V) sodium azide
Preservative:	Sodium azide
Precaution of Use:	This product contains sodium azide: a POISONOUS AND HAZARDOUS SUBSTANCE which should be handled by trained staff only.
Handling Advice:	Avoid repeated freezing and thawing.
Storage:	4 °C/-20 °C
Storage Comment:	Store the antibody undiluted at 2-8 °C for one month or (in aliquots) at -20 °C for longer.



### Western Blotting

**Image 1.** Western blot analysis of ITIH2 antibody (C-term) in HepG2 cell line lysates (35ug/lane). ITIH2 (arrow) was detected using the purified Pab.