

Datasheet for ABIN453164
anti-KYNU antibody (C-Term)



[Go to Product page](#)

1 Image

Overview

Quantity:	0.4 mL
Target:	KYNU
Binding Specificity:	C-Term
Reactivity:	Human
Host:	Rabbit
Clonality:	Polyclonal
Conjugate:	This KYNU antibody is un-conjugated
Application:	Western Blotting (WB), Enzyme Immunoassay (EIA)

Product Details

Immunogen:	KLH conjugated synthetic peptide selected from the C-terminal region of human KYNU
Specificity:	This antibody reacts to KYNU.
Purification:	Saturated Ammonium Sulfate (SAS) precipitation

Target Details

Target:	KYNU
Alternative Name:	Kynureninase (KYNU Products)
Background:	KYNU is a pyridoxal-5'-phosphate (pyridoxal-P) dependent enzyme that catalyzes the cleavage of L-kynurenine and L-3-hydroxykynurenine into anthranilic and 3-hydroxyanthranilic acids, respectively. KYNU is involved in the biosynthesis of NAD cofactors from tryptophan through the kynurenine pathway. Synonyms: KYNU, L-kynurenine hydrolase

Target Details

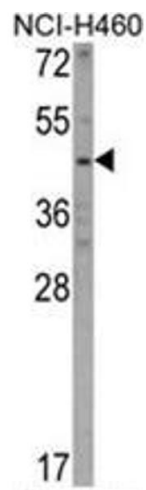
Gene ID:	8942
NCBI Accession:	NP_003928
UniProt:	Q16719

Application Details

Application Notes:	ELISA: 1/1,000. Western blotting: 1/50 - 1/100. Other applications not tested. Optimal dilutions are dependent on conditions and should be determined by the user.
Restrictions:	For Research Use only

Handling

Format:	Liquid
Concentration:	0.25 mg/mL
Buffer:	PBS with 0.09 % (W/V) sodium azide
Preservative:	Sodium azide
Precaution of Use:	This product contains sodium azide: a POISONOUS AND HAZARDOUS SUBSTANCE which should be handled by trained staff only.
Handling Advice:	Avoid repeated freezing and thawing.
Storage:	4 °C/-20 °C
Storage Comment:	Store the antibody undiluted at 2-8 °C for one month or (in aliquots) at -20 °C for longer.



Western Blotting

Image 1. Western blot analysis of KYNU Antibody (C-term) in NCI-H460 cell line lysates (35ug/lane). KYNU (arrow) was detected using the purified Pab.