



[Go to Product page](#)

Datasheet for ABIN453171  
**anti-LTA antibody (Middle Region)**

3 Images

Overview

Quantity:	0.4 mL
Target:	LTA
Binding Specificity:	Middle Region
Reactivity:	Human
Host:	Rabbit
Clonality:	Polyclonal
Application:	Western Blotting (WB), Immunohistochemistry (Paraffin-embedded Sections) (IHC (p)), Enzyme Immunoassay (EIA)

Product Details

Immunogen:	KLH conjugated synthetic peptide selected from the Center region of human LTA
Specificity:	This antibody reacts to TNF-beta / Lymphotoxin-alpha.
Purification:	Affinity chromatography on Protein A

Target Details

Target:	LTA
Alternative Name:	TNF-beta / Lymphotoxin-alpha ( <a href="#">LTA Products</a> )
Target Type:	Chemical
Background:	LTA, a member of the tumor necrosis factor family, is a cytokine produced by lymphocytes. The protein is highly inducible, secreted, and forms heterotrimers with lymphotoxin-beta which anchor lymphotoxin-alpha to the cell surface. This protein also mediates a large variety of

## Target Details

---

inflammatory, immunostimulatory, and antiviral responses, is involved in the formation of secondary lymphoid organs during development and plays a role in apoptosis. Synonyms: LT-alpha, LTA, TNFB, TNFSF1, Tumor necrosis factor ligand superfamily member 1

Gene ID: 4049

NCBI Accession: [NP\\_000586](#)

UniProt: [P01374](#)

Pathways: [Regulation of Leukocyte Mediated Immunity](#), [Positive Regulation of Immune Effector Process](#)

## Application Details

---

Application Notes: ELISA: 1/1,000. Western blotting: 1/100 - 1/500. Immunohistochemistry on paraffin sections: 1/50 - 1/100.  
Other applications not tested.  
Optimal dilutions are dependent on conditions and should be determined by the user.

Restrictions: For Research Use only

## Handling

---

Format: Liquid

Concentration: 0.25 mg/mL

Buffer: PBS with 0.09 % (W/V) sodium azide

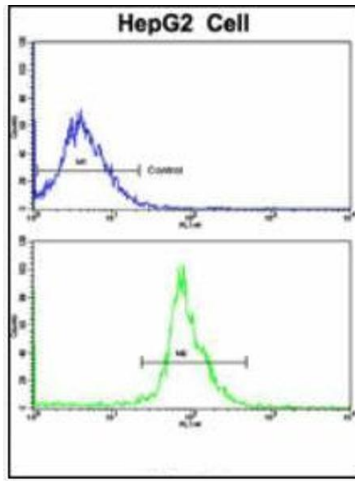
Preservative: Sodium azide

Precaution of Use: This product contains sodium azide: a POISONOUS AND HAZARDOUS SUBSTANCE which should be handled by trained staff only.

Handling Advice: Avoid repeated freezing and thawing.

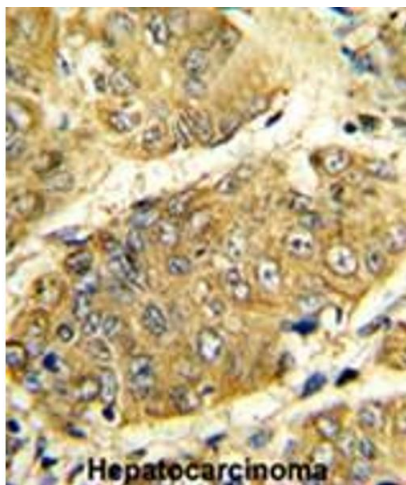
Storage: 4 °C/-20 °C

Storage Comment: Store the antibody undiluted at 2-8 °C for one month or (in aliquots) at -20 °C for longer.



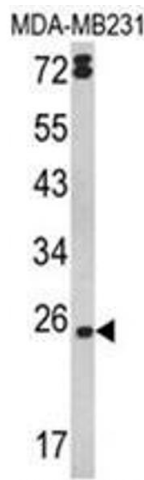
### Flow Cytometry

**Image 1.** Flow Cytometric analysis of HepG2 cells using LTA Antibody (Center)(bottom histogram) compared to a negative control cell (top histogram). FITC-conjugated Goat-anti-Rabbit secondary antibodies were used for the analysis.



### Immunohistochemistry (Paraffin-embedded Sections)

**Image 2.** Formalin-fixed and paraffin-embedded human hepatocarcinoma reacted with LTA Antibody (Center), which was peroxidase-conjugated to the secondary antibody, followed by DAB staining.



### Western Blotting

**Image 3.** Western blot analysis of LTA Antibody (Center) in MDA-MB231 cell line lysates (35ug/lane). LTA (arrow) was detected using the purified Pab.