

Datasheet for ABIN453173  
**anti-MafF antibody (Middle Region)**[Go to Product page](#)

## 1 Image

## Overview

Quantity:	0.4 mL
Target:	MafF (MAFF)
Binding Specificity:	Middle Region
Reactivity:	Human, Mouse
Host:	Rabbit
Clonality:	Polyclonal
Conjugate:	This MafF antibody is un-conjugated
Application:	Western Blotting (WB), Enzyme Immunoassay (EIA)

## Product Details

Immunogen:	KLH conjugated synthetic peptide selected from the Center region of human MAFF
Specificity:	This antibody reacts to MAFF.
Purification:	Saturated Ammonium Sulfate (SAS) precipitation

## Target Details

Target:	MafF (MAFF)
Alternative Name:	MAFF ( <a href="#">MAFF Products</a> )
Background:	MAFF is a basic leucine zipper (bZIP) transcription factor that lacks a transactivation domain. It is known to bind the US-2 DNA element in the promoter of the oxytocin receptor (OTR) gene and most likely heterodimerizes with other leucine zipper-containing proteins to enhance expression of the OTR gene during term pregnancy. This protein can also form homodimers,

## Target Details

and since it lacks a transactivation domain, the homodimer may act as a repressor of transcription. Synonyms: Transcription factor MafF, v-maf musculoaponeurotic fibrosarcoma oncogene homolog

Gene ID: 23764

NCBI Accession: [NP\\_036455](#)

UniProt: [Q9ULX9](#)

Pathways: [Myometrial Relaxation and Contraction](#)

## Application Details

Application Notes: ELISA: 1/1,000. Western blotting: 1/50 - 1/100.  
Other applications not tested.  
Optimal dilutions are dependent on conditions and should be determined by the user.

Restrictions: For Research Use only

## Handling

Format: Liquid

Concentration: 0.25 mg/mL

Buffer: PBS with 0.09 % (W/V) sodium azide

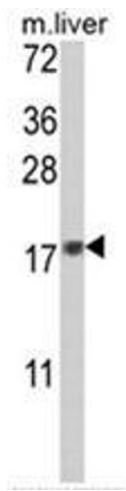
Preservative: Sodium azide

Precaution of Use: This product contains sodium azide: a POISONOUS AND HAZARDOUS SUBSTANCE which should be handled by trained staff only.

Handling Advice: Avoid repeated freezing and thawing.

Storage: 4 °C/-20 °C

Storage Comment: Store the antibody undiluted at 2-8 °C for one month or (in aliquots) at -20 °C for longer.



Western Blotting

**Image 1.** Western blot analysis of MAFF Antibody (Center) in mouse liver tissue lysates (35ug/lane). MAFF (arrow) was detected using the purified Pab.