

Datasheet for ABIN453174

anti-MAML3 antibody (C-Term)



[Go to Product page](#)

1 Image

Overview

Quantity:	0.4 mL
Target:	MAML3
Binding Specificity:	C-Term
Reactivity:	Human
Host:	Rabbit
Clonality:	Polyclonal
Conjugate:	This MAML3 antibody is un-conjugated
Application:	Western Blotting (WB), Enzyme Immunoassay (EIA)

Product Details

Immunogen:	KLH conjugated synthetic peptide selected from the C-terminal region of human MAML3
Specificity:	This antibody reacts to Mastermind-like protein 3.
Purification:	Saturated Ammonium Sulfate (SAS) precipitation

Target Details

Target:	MAML3
Alternative Name:	Mastermind-Like Protein 3 (MAML3 Products)
Background:	MAML3 acts as a transcriptional coactivator for NOTCH proteins. The protein has been shown to amplify NOTCH-induced transcription of HES1. Synonyms: MAML-3, MAML3, Mam-3
Gene ID:	55534

Target Details

NCBI Accession: [NP_061187](#)

UniProt: [Q96JK9](#)

Application Details

Application Notes: ELISA: 1/1,000. Western blotting: 1/50 - 1/100.
Other applications not tested.
Optimal dilutions are dependent on conditions and should be determined by the user.

Restrictions: For Research Use only

Handling

Format: Liquid

Concentration: 0.25 mg/mL

Buffer: PBS with 0.09 % (W/V) sodium azide

Preservative: Sodium azide

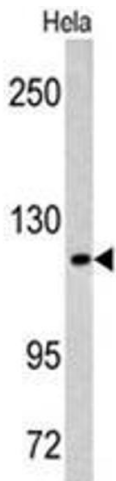
Precaution of Use: This product contains sodium azide: a POISONOUS AND HAZARDOUS SUBSTANCE which should be handled by trained staff only.

Handling Advice: Avoid repeated freezing and thawing.

Storage: 4 °C/-20 °C

Storage Comment: Store the antibody undiluted at 2-8 °C for one month or (in aliquots) at -20 °C for longer.

Images



Western Blotting

Image 1. Western blot analysis of MAML3 antibody (C-term) in HeLa cell line lysates (35ug/lane). MAML3 (arrow) was detected using the purified Pab.