

Datasheet for ABIN453247

anti-PABP antibody (Middle Region)



[Go to Product page](#)

1 Image

Overview

Quantity:	0.4 mL
Target:	PABP (PABPC1)
Binding Specificity:	Middle Region
Reactivity:	Human, Mouse
Host:	Rabbit
Clonality:	Polyclonal
Conjugate:	This PABP antibody is un-conjugated
Application:	Western Blotting (WB), Enzyme Immunoassay (EIA)

Product Details

Immunogen:	KLH conjugated synthetic peptide selected from the Center region of human PABPC1
Specificity:	This antibody reacts to PABPC1.
Purification:	Saturated Ammonium Sulfate (SAS) precipitation

Target Details

Target:	PABP (PABPC1)
Alternative Name:	PABPC1 (PABPC1 Products)
Background:	PABPC1 binds the poly(A) tail of mRNA. It may be involved in cytoplasmic regulatory processes of mRNA metabolism such as pre-mRNA splicing. Its function in translational initiation regulation can either be enhanced by PAIP1 or repressed by PAIP2. PABPC1 can probably bind to cytoplasmic RNA sequences other than poly(A) in vivo. It may be involved in translationally

Target Details

coupled mRNA turnover. Implicated with other RNA-binding proteins in the cytoplasmic deadenylation/translational and decay interplay of the FOS mRNA mediated by the major coding-region determinant of instability (mCRD) domain.Synonyms: PAB1, PABP-1, PABP1, PABPC2, Poly(A)-binding protein 1, Polyadenylate-binding protein 1

Gene ID: 26986

NCBI Accession: [NP_002559](#)

UniProt: [P11940](#)

Pathways: [SARS-CoV-2 Protein Interactome](#)

Application Details

Application Notes: ELISA: 1/1,000. Western blotting: 1/50 - 1/100.
Other applications not tested.
Optimal dilutions are dependent on conditions and should be determined by the user.

Restrictions: For Research Use only

Handling

Format: Liquid

Concentration: 0.25 mg/mL

Buffer: PBS with 0.09 % (W/V) sodium azide

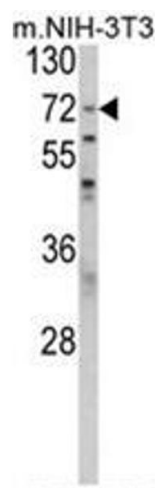
Preservative: Sodium azide

Precaution of Use: This product contains sodium azide: a POISONOUS AND HAZARDOUS SUBSTANCE which should be handled by trained staff only.

Handling Advice: Avoid repeated freezing and thawing.

Storage: 4 °C/-20 °C

Storage Comment: Store the antibody undiluted at 2-8 °C for one month or (in aliquots) at -20 °C for longer.



Western Blotting

Image 1. Western blot analysis of PABPC1 Antibody (Center) in NIH-3T3 cell line lysates (35ug/lane). PABPC1 (arrow) was detected using the purified Pab.