

Datasheet for ABIN453278
anti-PI4KB antibody (Middle Region)

3 Images

[Go to Product page](#)

Overview

Quantity:	0.4 mL
Target:	PI4KB
Binding Specificity:	Middle Region
Reactivity:	Human
Host:	Rabbit
Clonality:	Polyclonal
Conjugate:	This PI4KB antibody is un-conjugated
Application:	Western Blotting (WB), Immunohistochemistry (Paraffin-embedded Sections) (IHC (p)), Flow Cytometry (FACS), Enzyme Immunoassay (EIA)

Product Details

Immunogen:	KLH conjugated synthetic peptide selected from the Center region of human PIK4CB
Isotype:	Ig Fraction
Cross-Reactivity (Details):	Species reactivity (expected):Bovine, Mouse, Rat, Zebrafish. Species reactivity (tested):Human.
Purification:	Saturated Ammonium Sulfate (SAS) precipitation

Target Details

Target:	PI4KB
Alternative Name:	PI4KB (PI4KB Products)

Target Details

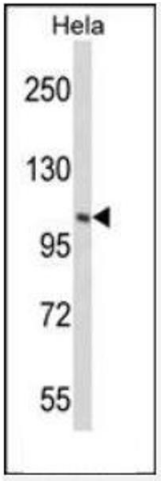
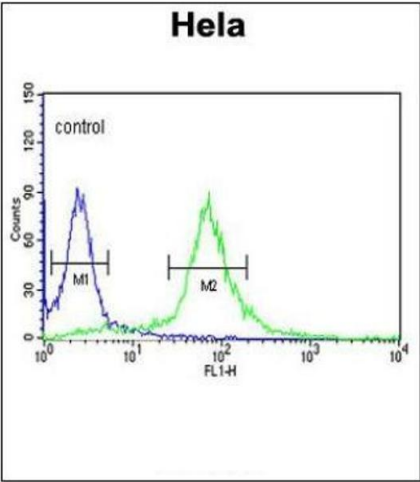
Background:	PIK4CB phosphorylates phosphatidylinositol (PI) in the first committed step in the production of the second messenger inositol-1,4,5-trisphosphate (PIP). It may regulate Golgi disintegration/reorganization during mitosis, possibly via its phosphorylation.Synonyms: NPIK, PI4K-beta, PI4K92, PI4Kbeta, PIK4CB, Phosphatidylinositol 4-kinase beta, PtdIns 4-kinase beta
Gene ID:	5298
NCBI Accession:	NP_002642
UniProt:	Q9UBF8
Pathways:	Inositol Metabolic Process

Application Details

Application Notes:	ELISA: 1/1,000. Western blotting: 1/50 - 1/100. Other applications not tested. Optimal dilutions are dependent on conditions and should be determined by the user.
Restrictions:	For Research Use only

Handling

Format:	Liquid
Concentration:	0.25 mg/mL
Buffer:	PBS with 0.09 % (W/V) Sodium Azide
Preservative:	Sodium azide
Precaution of Use:	This product contains sodium azide: a POISONOUS AND HAZARDOUS SUBSTANCE which should be handled by trained staff only.
Handling Advice:	Avoid repeated freezing and thawing.
Storage:	4 °C/-20 °C
Storage Comment:	Store the antibody undiluted at 2-8 °C for one month or (in aliquots) at -20 °C for longer.



Flow Cytometry

Image 1. PIK4CB Antibody (Center) flow cytometric analysis of HeLa cells (right histogram) compared to a negative control cell (left histogram). FITC-conjugated goat-anti-rabbit secondary antibodies were used for the analysis.

Immunohistochemistry (Paraffin-embedded Sections)

Image 2. Formalin-fixed and paraffin-embedded human skeletal muscle reacted with PIK4CB Antibody (Center), which was peroxidase-conjugated to the secondary antibody, followed by DAB staining. This data demonstrates the use of this antibody for immunohistochemistry; clinical relevance has not been evaluated.

Western Blotting

Image 3. Western blot analysis of PIK4CB Antibody (Center) in HeLa cell line lysates (35ug/lane). PIK4CB (arrow) was detected using the purified Pab.