

Datasheet for ABIN453315
anti-PSMD7 antibody (N-Term)



[Go to Product page](#)

1 Image

Overview

Quantity:	0.4 mL
Target:	PSMD7
Binding Specificity:	N-Term
Reactivity:	Human
Host:	Rabbit
Clonality:	Polyclonal
Application:	Western Blotting (WB), Enzyme Immunoassay (EIA)

Product Details

Immunogen:	KLH conjugated synthetic peptide selected from the N-terminal region of human PSMD7
Specificity:	This antibody reacts to PSMD7.
Purification:	Saturated Ammonium Sulfate (SAS) precipitation

Target Details

Target:	PSMD7
Alternative Name:	PSMD7 (PSMD7 Products)
Background:	PSMD7 acts as a regulatory subunit of the 26S proteasome which is involved in the ATP-dependent degradation of ubiquitinated proteins. Synonyms: 26S proteasome non-ATPase regulatory subunit 7, 26S proteasome regulatory subunit RPN8, 26S proteasome regulatory subunit S12, MOV34L, Mov34 protein homolog, Proteasome 19S S12, Proteasome subunit p40
Gene ID:	5713

Target Details

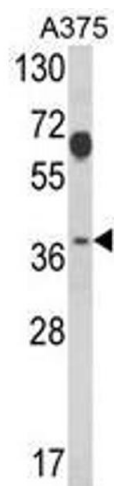
NCBI Accession:	NP_002802
UniProt:	P51665
Pathways:	Mitotic G1-G1/S Phases , DNA Replication , Synthesis of DNA , Ubiquitin Proteasome Pathway

Application Details

Application Notes:	ELISA: 1/1,000. Western blotting: 1/50 - 1/100. Other applications not tested. Optimal dilutions are dependent on conditions and should be determined by the user.
Restrictions:	For Research Use only

Handling

Format:	Liquid
Concentration:	0.25 mg/mL
Buffer:	PBS with 0.101 % (W/V) sodium azide
Preservative:	Sodium azide
Precaution of Use:	This product contains sodium azide: a POISONOUS AND HAZARDOUS SUBSTANCE which should be handled by trained staff only.
Handling Advice:	Avoid repeated freezing and thawing.
Storage:	4 °C/-20 °C
Storage Comment:	Store the antibody undiluted at 2-8 °C for one month or (in aliquots) at -20 °C for longer.



Western Blotting

Image 1. Western blot analysis of PSMD7 Antibody (N-term) in A375 cell line lysates (35ug/lane). PSMD7 (arrow) was detected using the purified Pab.