

Datasheet for ABIN453324
anti-RAB13 antibody (Middle Region)[Go to Product page](#)

1 Image

Overview

Quantity:	0.4 mL
Target:	RAB13
Binding Specificity:	Middle Region
Reactivity:	Human, Mouse
Host:	Rabbit
Clonality:	Polyclonal
Conjugate:	This RAB13 antibody is un-conjugated
Application:	Western Blotting (WB), Enzyme Immunoassay (EIA)

Product Details

Immunogen:	KLH conjugated synthetic peptide selected from the Center region of human RAB13
Specificity:	This antibody reacts to RAB13.
Purification:	Saturated Ammonium Sulfate (SAS) precipitation

Target Details

Target:	RAB13
Alternative Name:	RAB13 (RAB13 Products)
Background:	RAB13 can participate in polarized transport, in the assembly and/or the activity of tight junctions. Synonyms: Cell growth-inhibiting gene 4 protein, GIG4, Rab-13, Ras-related protein Rab-13

Target Details

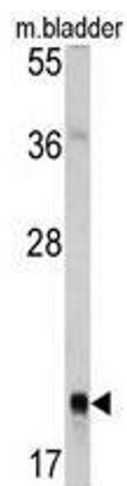
Gene ID:	5872
NCBI Accession:	NP_002861
UniProt:	P51153
Pathways:	Cell-Cell Junction Organization

Application Details

Application Notes:	ELISA: 1/1,000. Western blotting: 1/50 - 1/100. Other applications not tested. Optimal dilutions are dependent on conditions and should be determined by the user.
Restrictions:	For Research Use only

Handling

Format:	Liquid
Concentration:	0.25 mg/mL
Buffer:	PBS with 0.09 % (W/V) sodium azide
Preservative:	Sodium azide
Precaution of Use:	This product contains sodium azide: a POISONOUS AND HAZARDOUS SUBSTANCE which should be handled by trained staff only.
Handling Advice:	Avoid repeated freezing and thawing.
Storage:	4 °C/-20 °C
Storage Comment:	Store the antibody undiluted at 2-8 °C for one month or (in aliquots) at -20 °C for longer.



Western Blotting

Image 1. Western blot analysis of RAB13 antibody (Center) in mouse bladder tissue lysates (35ug/lane). RAB13 (arrow) was detected using the purified Pab.