

Datasheet for ABIN453348
anti-RPS15 antibody (N-Term)[Go to Product page](#)

2 Images

Overview

| | |
|----------------------|---|
| Quantity: | 0.4 mL |
| Target: | RPS15 |
| Binding Specificity: | N-Term |
| Reactivity: | Human |
| Host: | Rabbit |
| Clonality: | Polyclonal |
| Conjugate: | This RPS15 antibody is un-conjugated |
| Application: | Western Blotting (WB), Enzyme Immunoassay (EIA) |

Product Details

| | |
|---------------|---|
| Immunogen: | KLH conjugated synthetic peptide selected from the N-terminal region of human RPS15 |
| Specificity: | This antibody reacts to RPS15. |
| Purification: | Affinity chromatography on Protein A |

Target Details

| | |
|-------------------|--|
| Target: | RPS15 |
| Alternative Name: | RPS15 / RIG (RPS15 Products) |
| Background: | Ribosomes, the organelles that catalyze protein synthesis, consist of a small 40S subunit and a large 60S subunit. Together these subunits are composed of 4 RNA species and approximately 80 structurally distinct proteins. RPS15 is a component of the 40S subunit. The protein belongs to the S19P family of ribosomal proteins. It is located in the cytoplasm. Synonyms: 40S |

Target Details

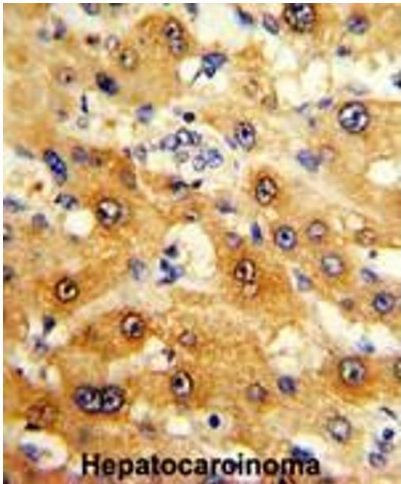
| | |
|-----------------|--|
| | ribosomal protein S15 |
| Gene ID: | 6209 |
| NCBI Accession: | NP_001009 |
| UniProt: | P62841 |
| Pathways: | Ribonucleoprotein Complex Subunit Organization , Ribosome Assembly |

Application Details

| | |
|--------------------|--|
| Application Notes: | ELISA: 1/1,000. Western blotting: 1/100 - 1/500. Immunohistochemistry on paraffin sections: 1/50 - 1/100. Other applications not tested. Optimal dilutions are dependent on conditions and should be determined by the user. |
| Restrictions: | For Research Use only |

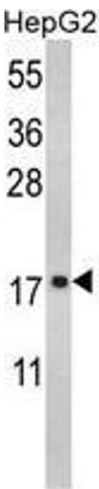
Handling

| | |
|--------------------|--|
| Format: | Liquid |
| Concentration: | 0.25 mg/mL |
| Buffer: | PBS with 0.09 % (W/V) sodium azide |
| Preservative: | Sodium azide |
| Precaution of Use: | This product contains sodium azide: a POISONOUS AND HAZARDOUS SUBSTANCE which should be handled by trained staff only. |
| Handling Advice: | Avoid repeated freezing and thawing. |
| Storage: | 4 °C/-20 °C |
| Storage Comment: | Store the antibody undiluted at 2-8 °C for one month or (in aliquots) at -20 °C for longer. |



Immunohistochemistry (Paraffin-embedded Sections)

Image 1. Formalin-fixed and paraffin-embedded human hepatocarcinoma reacted with RPS15 Antibody (N-term), which was peroxidase-conjugated to the secondary antibody, followed by DAB staining.



Western Blotting

Image 2. Western blot analysis of RPS15 Antibody (N-term) in HepG2 cell line lysates (35ug/lane). RPS15 (arrow) was detected using the purified Pab.