

Datasheet for ABIN453353
anti-RPS18 antibody (Middle Region)

2 Images

[Go to Product page](#)

Overview

Quantity:	0.4 mL
Target:	RPS18
Binding Specificity:	Middle Region
Reactivity:	Human, Mouse
Host:	Rabbit
Clonality:	Polyclonal
Application:	Western Blotting (WB), Immunohistochemistry (Paraffin-embedded Sections) (IHC (p)), Enzyme Immunoassay (EIA)

Product Details

Immunogen:	KLH conjugated synthetic peptide selected from the Center region of human RS18
Isotype:	Ig Fraction
Specificity:	This antibody recognizes RS18.
Cross-Reactivity (Details):	Species reactivity (expected):Bovine, Rat, Pig. Species reactivity (tested):Human, Mouse.
Purification:	Affinity chromatography on Protein A

Target Details

Target:	RPS18
Alternative Name:	RPS18 (RPS18 Products)

Target Details

Background: Ribosomes, the organelles that catalyze protein synthesis, consist of a small 40S subunit and a large 60S subunit. Together these subunits are composed of 4 RNA species and approximately 80 structurally distinct proteins. This protein is a ribosomal protein that is a component of the 40S subunit. The protein belongs to the S13P family of ribosomal proteins. It is located in the cytoplasm. Synonyms: 40S ribosomal protein S18, Ke-3, Ke3

Molecular Weight: 17719 Da

Gene ID: 100130553

NCBI Accession: [NP_072045](#)

UniProt: [P62269](#)

Application Details

Application Notes: ELISA: 1/1,000. Western blotting: 1/100 - 1/500.
Other applications not tested.
Optimal dilutions are dependent on conditions and should be determined by the user.

Restrictions: For Research Use only

Handling

Format: Liquid

Concentration: 0.25 mg/mL

Buffer: PBS with 0.09 % (W/V) Sodium Azide

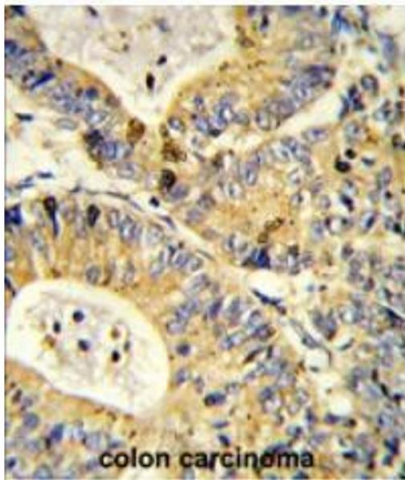
Preservative: Sodium azide

Precaution of Use: This product contains sodium azide: a POISONOUS AND HAZARDOUS SUBSTANCE which should be handled by trained staff only.

Handling Advice: Avoid repeated freezing and thawing.

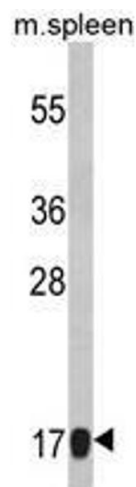
Storage: 4 °C/-20 °C

Storage Comment: Store the antibody undiluted at 2-8 °C for one month or (in aliquots) at -20 °C for longer.



Immunohistochemistry (Paraffin-embedded Sections)

Image 1. Formalin-fixed and paraffin-embedded human colon carcinoma reacted with RS18 Antibody (Center) followed which was peroxidase-conjugated to the secondary antibody, followed by DAB staining. This data demonstrates the use of this antibody for immunohistochemistry; clinical relevance has not been evaluated.



Western Blotting

Image 2. Western blot analysis of RS18 Antibody (Center) Cat.-No AP17722PU-N in mouse spleen tissue lysates (35ug/lane). RS18 (arrow) was detected using the purified Pab.