

Datasheet for ABIN453373  
**anti-SRSF1 antibody (C-Term)**



[Go to Product page](#)

2 Images

## Overview

Quantity:	0.4 mL
Target:	SRSF1
Binding Specificity:	AA 165-194, C-Term
Reactivity:	Human
Host:	Rabbit
Clonality:	Polyclonal
Conjugate:	This SRSF1 antibody is un-conjugated
Application:	Western Blotting (WB), Immunohistochemistry (Paraffin-embedded Sections) (IHC (p)), Enzyme Immunoassay (EIA)

## Product Details

Immunogen:	KLH conjugated synthetic peptide between 165~194 amino acids from the C-terminal region of Human SFRS1 Gene name: SFRS1
Specificity:	This antibody recognizes SFRS1.
Purification:	Saturated Ammonium Sulfate (SAS) precipitation

## Target Details

Target:	SRSF1
Alternative Name:	SFRS1 (SF2) ( <a href="#">SRSF1 Products</a> )
Background:	SFRS1 is a member of the arginine/serine-rich splicing factor protein family, and functions in both constitutive and alternative pre-mRNA splicing. The protein binds to pre-mRNA transcripts

## Target Details

and components of the spliceosome, and can either activate or repress splicing depending on the location of the pre-mRNA binding site. The protein's ability to activate splicing is regulated by phosphorylation and interactions with other splicing factor associated proteins. Synonyms: ASF, ASF-1, Alternative-splicing factor 1, SF2P33, Splicing factor arginine/serine-rich 1, pre-mRNA-splicing factor SF2 P33 subunit

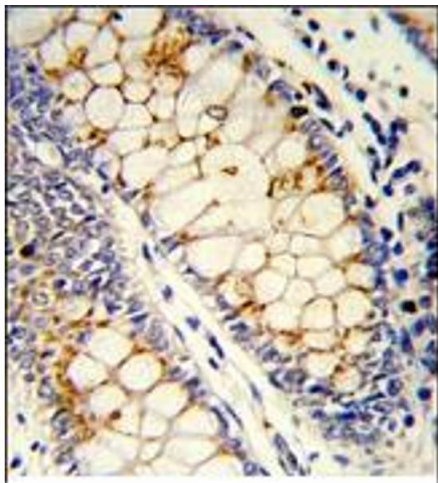
Gene ID:	6426
NCBI Accession:	<a href="#">NP_008855</a>
UniProt:	<a href="#">Q07955</a>
Pathways:	<a href="#">Ribonucleoprotein Complex Subunit Organization</a>

## Application Details

Application Notes:	ELISA: 1/1,000. Western blotting: 1/50 - 1/100. Other applications not tested. Optimal dilutions are dependent on conditions and should be determined by the user.
Restrictions:	For Research Use only

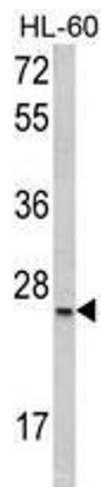
## Handling

Format:	Liquid
Concentration:	0.25 mg/mL
Buffer:	PBS with 0.09 % (W/V) Sodium Azide as preservative
Preservative:	Sodium azide
Precaution of Use:	This product contains sodium azide: a POISONOUS AND HAZARDOUS SUBSTANCE which should be handled by trained staff only.
Handling Advice:	Avoid repeated freezing and thawing.
Storage:	4 °C/-20 °C
Storage Comment:	Store the antibody undiluted at 2-8 °C for one month or (in aliquots) at -20 °C for longer.



**Immunohistochemistry (Paraffin-embedded Sections)**

**Image 1.** Formalin-Fixed, Paraffin-Embedded Human colon carcinoma reacted with SFRS1 Antibody (C-term), which was Peroxidase-conjugated to the secondary antibody, followed by DAB staining. This data demonstrates the use of this antibody for immunohistochemistry. Clinical relevance has not been evaluated.



**Western Blotting**

**Image 2.** Western blot analysis of SFRS1 Antibody (C-term) in HL-60 cell line lysates (35ug/lane). SFRS1 (arrow) was detected using the purified Pab.