

Datasheet for ABIN453392
anti-SPCS3 antibody (C-Term)[Go to Product page](#)

1 Image

Overview

Quantity:	0.4 mL
Target:	SPCS3
Binding Specificity:	C-Term
Reactivity:	Human, Mouse
Host:	Rabbit
Clonality:	Polyclonal
Application:	Western Blotting (WB), Enzyme Immunoassay (EIA)

Product Details

Immunogen:	KLH conjugated synthetic peptide selected from the C-terminal region of human SPCS3
Specificity:	This antibody reacts to SPCS3.
Purification:	Saturated Ammonium Sulfate (SAS) precipitation

Target Details

Target:	SPCS3
Alternative Name:	SPCS3 / SPC22 (SPCS3 Products)
Background:	SPCS3 is a component of the microsomal signal peptidase complex which removes signal peptides from nascent proteins as they are translocated into the lumen of the endoplasmic reticulum. Synonyms: SPC22/23, Signal peptidase complex subunit 3
Gene ID:	60559

Target Details

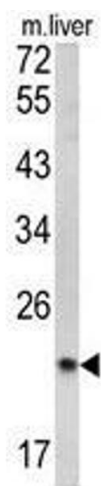
NCBI Accession:	NP_068747
UniProt:	P61009
Pathways:	Peptide Hormone Metabolism

Application Details

Application Notes:	ELISA: 1/1,000. Western blotting: 1/50 - 1/100. Other applications not tested. Optimal dilutions are dependent on conditions and should be determined by the user.
Restrictions:	For Research Use only

Handling

Format:	Liquid
Concentration:	0.25 mg/mL
Buffer:	PBS with 0.09 % (W/V) sodium azide
Preservative:	Sodium azide
Precaution of Use:	This product contains sodium azide: a POISONOUS AND HAZARDOUS SUBSTANCE which should be handled by trained staff only.
Handling Advice:	Avoid repeated freezing and thawing.
Storage:	4 °C/-20 °C
Storage Comment:	Store the antibody undiluted at 2-8 °C for one month or (in aliquots) at -20 °C for longer.



Western Blotting

Image 1. Western blot analysis of SPCS3 antibody (C-term) in mouse liver tissue lysates (35ug/lane). SPCS3 (arrow) was detected using the purified Pab.