

Datasheet for ABIN453397
anti-SRP72 antibody (Middle Region)

3 Images

[Go to Product page](#)

Overview

Quantity:	0.4 mL
Target:	SRP72
Binding Specificity:	AA 126-156, Middle Region
Reactivity:	Human
Host:	Rabbit
Clonality:	Polyclonal
Conjugate:	This SRP72 antibody is un-conjugated
Application:	Western Blotting (WB), Flow Cytometry (FACS), Immunofluorescence (IF), Immunohistochemistry (Paraffin-embedded Sections) (IHC (p)), Enzyme Immunoassay (EIA)

Product Details

Immunogen:	KLH conjugated synthetic peptide between 126~156 amino acids from the Center region of Human SRP72 Genename: SRP72
Isotype:	Ig Fraction
Specificity:	This antibody recognizes SRP72 (Center).
Cross-Reactivity (Details):	Species reactivity (tested): Human.
Purification:	Affinity Chromatography on Protein A

Target Details

Target:	SRP72
---------	-------

Target Details

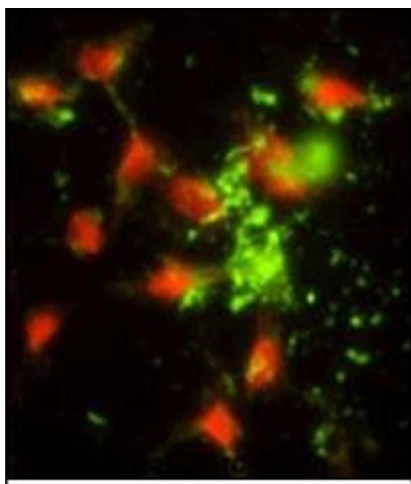
Alternative Name:	SRP72 (SRP72 Products)
Background:	Signal-recognition-particle assembly has a crucial role in targeting secretory proteins to the rough endoplasmic reticulum membrane. It binds the 7S RNA only in presence of SRP68. This ribonucleoprotein complex might interact directly with the docking protein in the ER membrane and possibly participate in the elongation arrest function.Synonyms: Signal recognition particle 72 kDa protein
Gene ID:	6731
NCBI Accession:	NP_008878
UniProt:	O76094
Pathways:	SARS-CoV-2 Protein Interactome

Application Details

Application Notes:	ELISA: 1/1,000. Western blotting: 1/100 - 1/500. Immunohistochemistry on paraffin sections: 1/50 - 1/100. Other applications not tested. Optimal dilutions are dependent on conditions and should be determined by the user.
Restrictions:	For Research Use only

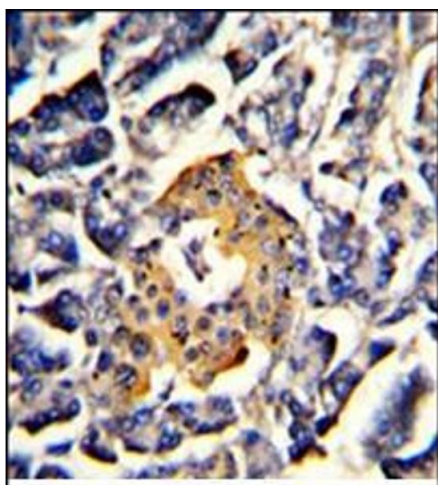
Handling

Format:	Liquid
Concentration:	0.25 mg/mL
Buffer:	PBS with 0.09 % (W/V) Sodium Azide as preservative
Preservative:	Sodium azide
Precaution of Use:	This product contains sodium azide: a POISONOUS AND HAZARDOUS SUBSTANCE which should be handled by trained staff only.
Handling Advice:	Avoid repeated freezing and thawing.
Storage:	4 °C/-20 °C
Storage Comment:	Store the antibody undiluted at 2-8 °C for one month or (in aliquots) at -20 °C for longer.



Immunofluorescence

Image 1. Immunofluorescence analysis of AP17766PU-N SRP72 antibody (Center) with HeLa cells. 0.025 mg/ml primary antibody was followed by FITC-conjugated Goat anti-Rabbit IgG (whole molecule). FITC emits green fluorescence. Red counterstaining is PI.



Immunohistochemistry (Paraffin-embedded Sections)

Image 2. AP17766PU-N SRP72 antibody staining of Formalin-Fixed, Paraffin-Embedded Human pancreas using peroxidase-conjugated to the secondary antibody, followed by DAB staining. This data demonstrates the use of this antibody for Immunohistochemistry. Clinical relevance has not been evaluated.



Western Blotting

Image 3. Western blot analysis of AP17766PU-N SRP72 antibody in HeLa cell line lysates (35 µg/lane). SRP72 (arrow) was detected using the purified Pab.