

Datasheet for ABIN453406

anti-TALDO1 antibody (Middle Region)



[Go to Product page](#)

1 Image

Overview

Quantity:	0.4 mL
Target:	TALDO1
Binding Specificity:	Middle Region
Reactivity:	Human
Host:	Rabbit
Clonality:	Polyclonal
Conjugate:	This TALDO1 antibody is un-conjugated
Application:	Western Blotting (WB), Enzyme Immunoassay (EIA)

Product Details

Immunogen:	KLH conjugated synthetic peptide selected from the Center region of human TALDO1
Specificity:	This antibody reacts to Transaldolase (TALDO1).
Purification:	Saturated Ammonium Sulfate (SAS) precipitation

Target Details

Target:	TALDO1
Alternative Name:	Transaldolase (TALDO1) (TALDO1 Products)
Background:	Transaldolase 1 is a key enzyme of the nonoxidative pentose phosphate pathway providing ribose-5-phosphate for nucleic acid synthesis and NADPH for lipid biosynthesis. This pathway can also maintain glutathione at a reduced state and thus protect sulfhydryl groups and cellular integrity from oxygen radicals. Synonyms: TAL, TALDO, TALDOR

Target Details

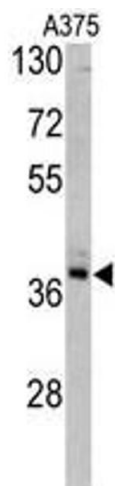
Gene ID:	6888
NCBI Accession:	NP_006746
UniProt:	P37837

Application Details

Application Notes:	ELISA: 1/1,000. Western blotting: 1/50 - 1/100. Other applications not tested. Optimal dilutions are dependent on conditions and should be determined by the user.
Restrictions:	For Research Use only

Handling

Format:	Liquid
Concentration:	0.25 mg/mL
Buffer:	PBS with 0.09 % (W/V) sodium azide
Preservative:	Sodium azide
Precaution of Use:	This product contains sodium azide: a POISONOUS AND HAZARDOUS SUBSTANCE which should be handled by trained staff only.
Handling Advice:	Avoid repeated freezing and thawing.
Storage:	4 °C/-20 °C
Storage Comment:	Store the antibody undiluted at 2-8 °C for one month or (in aliquots) at -20 °C for longer.



Western Blotting

Image 1. Western blot analysis of TALDO1 antibody (Center) in A375 cell line lysates (35ug/lane). TALDO1 (arrow) was detected using the purified Pab.