

Datasheet for ABIN453487
anti-ZWINT antibody (Middle Region)



[Go to Product page](#)

4 Images

Overview

Quantity:	0.4 mL
Target:	ZWINT
Binding Specificity:	Middle Region
Reactivity:	Human, Mouse
Host:	Rabbit
Clonality:	Polyclonal
Conjugate:	This ZWINT antibody is un-conjugated
Application:	Western Blotting (WB), Immunohistochemistry (Paraffin-embedded Sections) (IHC (p)), Flow Cytometry (FACS), Enzyme Immunoassay (EIA)

Product Details

Immunogen:	KLH conjugated synthetic peptide between 66~96 selected from the Center region of Human ZWINT Genename: ZWINT
Specificity:	This antibody recognizes ZW10 interactor/ZWINT (Center).
Purification:	Saturated Ammonium Sulfate (SAS) precipitation followed by dialysis against PBS.

Target Details

Target:	ZWINT
Alternative Name:	ZW10 Interactor / ZWINT (ZWINT Products)
Background:	ZWINT is clearly involved in kinetochore function although an exact role is not known. It interacts with ZW10, another kinetochore protein, possibly regulating the association between

Target Details

ZW10 and kinetochores. The protein localizes to prophase kinetochores before ZW10 does and it remains detectable on the kinetochore until late anaphase. It has a uniform distribution in the cytoplasm of interphase cells. Synonyms: ZW10-interacting protein 1, Zwint-1

Gene ID: 11130

NCBI Accession: [NP_001005413](#)

UniProt: [O95229](#)

Application Details

Application Notes: ELISA: 1/1,000. Western blotting: 1/50-1/100. Flow Cytometry: 1/10-1/50.
Immunohistochemistry: 1/50-1/100.
Other applications not tested.
Optimal dilutions are dependent on conditions and should be determined by the user.

Restrictions: For Research Use only

Handling

Format: Liquid

Concentration: 0.25 mg/mL

Buffer: PBS, 0.09 % (W/V) Sodium Azide

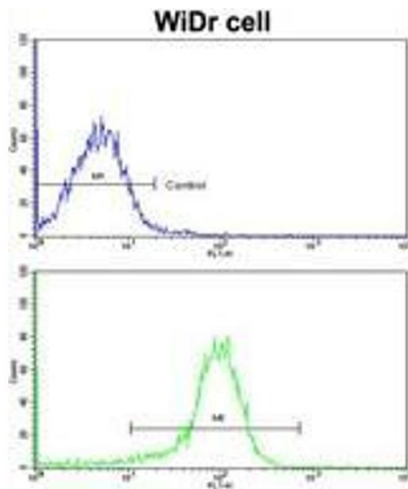
Preservative: Sodium azide

Precaution of Use: This product contains sodium azide: a POISONOUS AND HAZARDOUS SUBSTANCE which should be handled by trained staff only.

Handling Advice: Avoid repeated freezing and thawing.

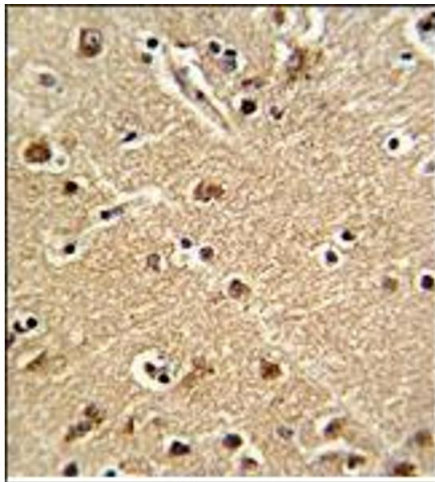
Storage: 4 °C/-20 °C

Storage Comment: Store the antibody undiluted at 2-8 °C for one month or (in aliquots) at -20 °C for longer.



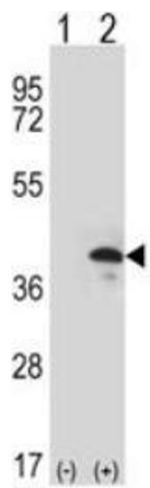
Flow Cytometry

Image 1. Flow Cytometry: Analysis of widr cells using AP17856PU-N ZWINT Antibody (Center)(bottom histogram) compared to a Negative control cell (Top histogram). FITC-conjugated Goat-anti-Rabbit secondary antibodies were used for the analysis.



Immunohistochemistry (Paraffin-embedded Sections)

Image 2. Immunohistochemistry: ZWINT Antibody staining of Formalin-Fixed, Paraffin-Embedded Human Brain Tissue. This ZWINT antibody (Center) was peroxidase-conjugated to the secondary antibody, followed by DAB staining. This data demonstrates the use of this antibody for immunohistochemistry. Clinical relevance has not been evaluated.



Western Blotting

Image 3. Western blot analysis: ZWINT Antibody staining of 293 cell lysates (2 µg/lane) either nontransfected (Lane 1) or transiently transfected (Lane 2) with the ZWINT gene.

Please check the [product details page](#) for more images. Overall 4 images are available for ABIN453487.