

Datasheet for ABIN453492  
**anti-ABI1 antibody (N-Term)**



[Go to Product page](#)

4 Images

Overview

Quantity:	0.4 mL
Target:	ABI1
Binding Specificity:	AA 87-117, N-Term
Reactivity:	Human
Host:	Rabbit
Clonality:	Polyclonal
Application:	Western Blotting (WB), Immunohistochemistry (Paraffin-embedded Sections) (IHC (p)), Immunofluorescence (IF), Flow Cytometry (FACS), Enzyme Immunoassay (EIA)

Product Details

Immunogen:	KLH conjugated synthetic peptide between 87~117 amino acids from the N-terminal region of Human ABI1
Specificity:	This antibody reacts to Abl interactor 1.
Purification:	Affinity chromatography on Protein A

Target Details

Target:	ABI1
Alternative Name:	ABI1 / SSH3BP1 ( <a href="#">ABI1 Products</a> )
Background:	ABI1 has been found to form a complex with EPS8 and SOS1, and is thought to be involved in the transduction of signals from Ras to Rac. In addition, this protein may play a role in the regulation of EGF-induced Erk pathway activation as well as cytoskeletal reorganization and

## Target Details

---

EGFR signaling.Synonyms: Abelson interactor 1, Abi-1, Abl interactor 1, Abl-binding protein 4, AbIBP4, Eps8 SH3 domain-binding protein, Nap1-binding protein, Spectrin SH3 domain-binding protein 1, Spectrin binding protein, e3B1

Gene ID: 10006

NCBI Accession: [NP\\_001012768](#)

UniProt: [Q8IZP0](#)

Pathways: [RTK Signaling](#), [Response to Water Deprivation](#), [ER-Nucleus Signaling](#)

## Application Details

---

Application Notes: ELISA: 1/1,000. Western blotting: 1/100 - 1/500.  
Other applications not tested.  
Optimal dilutions are dependent on conditions and should be determined by the user.

Restrictions: For Research Use only

## Handling

---

Format: Liquid

Concentration: 0.25 mg/mL

Buffer: PBS with 0.09 % (W/V) sodium azide

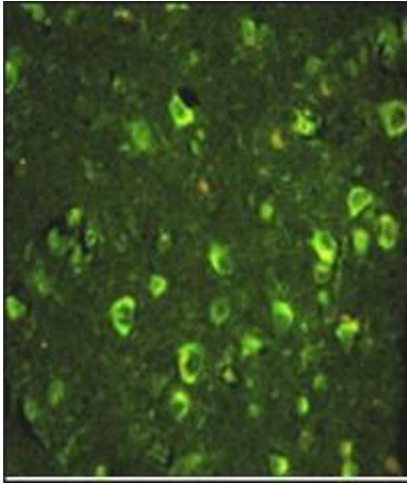
Preservative: Sodium azide

Precaution of Use: This product contains sodium azide: a POISONOUS AND HAZARDOUS SUBSTANCE which should be handled by trained staff only.

Handling Advice: Avoid repeated freezing and thawing.

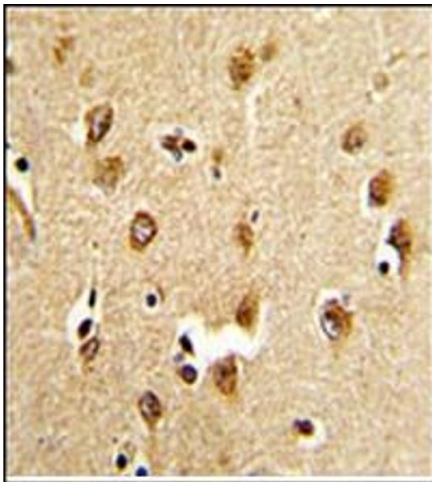
Storage: 4 °C/-20 °C

Storage Comment: Store the antibody undiluted at 2-8 °C for one month or (in aliquots) at -20 °C for longer.



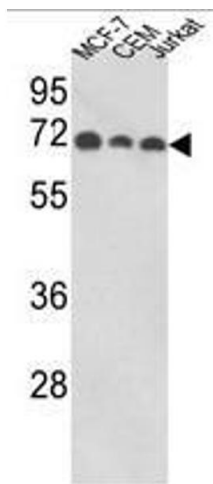
#### Immunohistochemistry (Paraffin-embedded Sections)

**Image 1.** Immunofluorescence analysis of ABI1 Antibody (N-term) with paraffin-embedded human brain tissue. 0.05 mg/ml primary antibody was followed by FITC-conjugated goat anti-rabbit IgG (whole molecule). FITC emits green fluorescence.



#### Immunohistochemistry (Paraffin-embedded Sections)

**Image 2.** Immunohistochemistry analysis in Formalin Fixed, Paraffin Embedded Human brain tissue stained with ABI1 Antibody (N-term) Cat.-No AP17861PU-N which was peroxidase-conjugated to the secondary antibody, followed by DAB staining. This data demonstrates the use of this antibody for immunohistochemistry; clinical relevance has not been evaluated.



#### Western Blotting

**Image 3.** Western blot analysis of ABI1 Antibody (N-term) in MCF-7, CEM, Jurkat cell line lysates (35ug/lane). ABI1 (arrow) was detected using the purified Pab.

Please check the [product details page](#) for more images. Overall 4 images are available for ABIN453492.