

Datasheet for ABIN453497
anti-ACSS3 antibody (Middle Region)[Go to Product page](#)

1 Image

Overview

Quantity:	0.4 mL
Target:	ACSS3
Binding Specificity:	Middle Region
Reactivity:	Human
Host:	Rabbit
Clonality:	Polyclonal
Application:	Western Blotting (WB), Enzyme Immunoassay (EIA)

Product Details

Immunogen:	KLH conjugated synthetic peptide selected from the Center region of human ACSS3
Specificity:	This antibody reacts to ACSS3.
Purification:	Affinity chromatography on Protein A

Target Details

Target:	ACSS3
Alternative Name:	ACSS3 (ACSS3 Products)
Background:	ACSS3 activates acetate so that it can be used for lipid synthesis or for energy generation.Synonyms: Acyl-CoA synthetase short-chain family member 3 mitochondrial, FLJ21963
Gene ID:	79611

Target Details

NCBI Accession: [NP_078836](#)

UniProt: [Q9H6R3](#)

Application Details

Application Notes: ELISA: 1/1,000. Western blotting: 1/100 - 1/500.
Other applications not tested.
Optimal dilutions are dependent on conditions and should be determined by the user.

Restrictions: For Research Use only

Handling

Format: Liquid

Concentration: 0.25 mg/mL

Buffer: PBS with 0.09 % (W/V) sodium azide

Preservative: Sodium azide

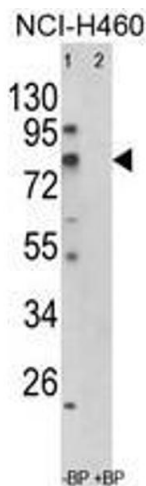
Precaution of Use: This product contains sodium azide: a POISONOUS AND HAZARDOUS SUBSTANCE which should be handled by trained staff only.

Handling Advice: Avoid repeated freezing and thawing.

Storage: 4 °C/-20 °C

Storage Comment: Store the antibody undiluted at 2-8 °C for one month or (in aliquots) at -20 °C for longer.

Images



Western Blotting

Image 1. Western blot analysis of ACSS3 Antibody