

Datasheet for ABIN453520

**anti-ARPC1B antibody (Middle Region)**[Go to Product page](#)**1** Image

## Overview

|                      |   |
|----------------------|---|
| Quantity:            | 0.4 mL  |
| Target:              | ARPC1B  |
| Binding Specificity: | Middle Region                                   |
| Reactivity:          | Human   |
| Host:                | Rabbit  |
| Clonality:           | Polyclonal                                      |
| Conjugate:           | This ARPC1B antibody is un-conjugated           |
| Application:         | Western Blotting (WB), Enzyme Immunoassay (EIA) |

## Product Details

|               |  |
|---------------|--|
| Immunogen:    | KLH conjugated synthetic peptide selected from the Center region of human ARPC1B |
| Specificity:  | This antibody reacts to ARPC1B.  |
| Purification: | Affinity chromatography on Protein A   |

## Target Details

|                   |  |
|-------------------|--|
| Target:           | ARPC1B   |
| Alternative Name: | ARPC1B / ARC41 ( <a href="#">ARPC1B Products</a> )   |
| Background:       | ARPC1B is one of seven subunits of the human Arp2/3 protein complex. This subunit is a member of the SOP2 family of proteins and is most similar to the protein encoded by gene ARPC1A. The similarity between these two proteins suggests that they both may function as p41 subunit of the human Arp2/3 complex that has been implicated in the control of actin |

## Target Details

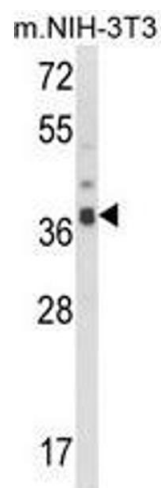
|                 |   |
|-----------------|---|
|                 | polymerization in cells. It is possible that the p41 subunit is involved in assembling and maintaining the structure of the Arp2/3 complex.Synonyms: Actin-related protein 2/3 complex subunit 1B, Arp2/3 complex 41 kDa subunit, p41-ARC |
| Gene ID:        | 10095   |
| NCBI Accession: | <a href="#">NP_005711</a>   |
| UniProt:        | <a href="#">O15143</a>  |
| Pathways:       | <a href="#">RTK Signaling, Regulation of Actin Filament Polymerization</a>  |

## Application Details

|                    |   |
|--------------------|---|
| Application Notes: | ELISA: 1/1,000. Western blotting: 1/100 - 1/500.<br><br>Other applications not tested.<br><br>Optimal dilutions are dependent on conditions and should be determined by the user. |
| Restrictions:      | For Research Use only   |

## Handling

|                    |  |
|--------------------|--|
| Format:            | Liquid   |
| Concentration:     | 0.25 mg/mL   |
| Buffer:            | PBS with 0.09 % (W/V) sodium azide   |
| Preservative:      | Sodium azide   |
| Precaution of Use: | This product contains sodium azide: a POISONOUS AND HAZARDOUS SUBSTANCE which should be handled by trained staff only. |
| Handling Advice:   | Avoid repeated freezing and thawing.   |
| Storage:           | 4 °C/-20 °C  |
| Storage Comment:   | Store the antibody undiluted at 2-8 °C for one month or (in aliquots) at -20 °C for longer.                            |



Western Blotting

**Image 1.** Western blot analysis of ARPC1B Antibody (Center) in NIH-3T3 cell line lysates (35ug/lane). ARPC1B (arrow) was detected using the purified Pab.