

Datasheet for ABIN453525

## anti-ATP12A antibody (Middle Region)



[Go to Product page](#)

### 1 Image

#### Overview

Quantity:	0.4 mL
Target:	ATP12A
Binding Specificity:	Middle Region
Reactivity:	Human
Host:	Rabbit
Clonality:	Polyclonal
Conjugate:	This ATP12A antibody is un-conjugated
Application:	Western Blotting (WB), Enzyme Immunoassay (EIA)

#### Product Details

Immunogen:	KLH conjugated synthetic peptide selected from the Center region of human ATP12A
Specificity:	This antibody reacts to ATP12A.
Purification:	Affinity chromatography on Protein A

#### Target Details

Target:	ATP12A
Alternative Name:	ATP12A / ATP1A1 ( <a href="#">ATP12A Products</a> )
Background:	ATP12A belongs to the family of P-type cation transport ATPases. This protein is a catalytic subunit of the ouabain-sensitive H <sup>+</sup> /K <sup>+</sup> -ATPase that catalyzes the hydrolysis of ATP coupled with the exchange of H(+) and K(+) ions across the plasma membrane. It is also responsible for potassium absorption in various tissues. Synonyms: Non-gastric H(+)/K(+) ATPase subunit

## Target Details

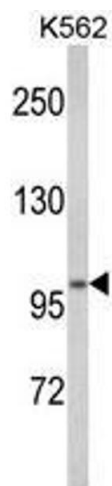
	alpha, Potassium-transporting ATPase alpha chain 2, Proton pump
Gene ID:	479
NCBI Accession:	<a href="#">NP_001667</a>
UniProt:	<a href="#">P54707</a>
Pathways:	<a href="#">Proton Transport</a> , <a href="#">Ribonucleoside Biosynthetic Process</a>

## Application Details

Application Notes:	ELISA: 1/1,000. Western blotting: 1/100 - 1/500. Other applications not tested. Optimal dilutions are dependent on conditions and should be determined by the user.
Restrictions:	For Research Use only

## Handling

Format:	Liquid
Concentration:	0.25 mg/mL
Buffer:	PBS with 0.09 % (W/V) sodium azide
Preservative:	Sodium azide
Precaution of Use:	This product contains sodium azide: a POISONOUS AND HAZARDOUS SUBSTANCE which should be handled by trained staff only.
Handling Advice:	Avoid repeated freezing and thawing.
Storage:	4 °C/-20 °C
Storage Comment:	Store the antibody undiluted at 2-8 °C for one month or (in aliquots) at -20 °C for longer.



Western Blotting

**Image 1.** Western blot analysis of ATP12A Antibody (Center) in K562 cell line lysates (35ug/lane). ATP12A (arrow) was detected using the purified Pab.