

Datasheet for ABIN453531
anti-BIM antibody (Middle Region)[Go to Product page](#)

4 Images

Overview

Quantity:	0.4 mL
Target:	BIM (BCL2L11)
Binding Specificity:	Middle Region
Reactivity:	Human
Host:	Rabbit
Clonality:	Polyclonal
Conjugate:	This BIM antibody is un-conjugated
Application:	Western Blotting (WB), Enzyme Immunoassay (EIA)

Product Details

Immunogen:	KLH conjugated synthetic peptide selected from the Center region of human BCL2L11
Specificity:	This antibody reacts to Bcl-2-like 11.
Purification:	Affinity chromatography on Protein A

Target Details

Target:	BIM (BCL2L11)
Abstract:	BCL2L11 Products
Background:	BCL2L11 belongs to the BCL-2 protein family. BCL-2 family members form hetero- or homodimers and act as anti- or pro-apoptotic regulators that are involved in a wide variety of cellular activities. This protein contains a Bcl-2 homology domain 3 (BH3). It has been shown to interact with other members of the BCL-2 protein family, including BCL2, BCL2L1/BCL-X(L), and

Target Details

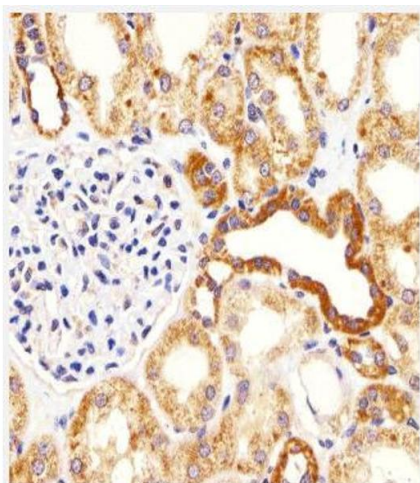
	MCL1, and to act as an apoptotic activator.Synonyms: BCL2L11, BIM, Bcl2-L-11, Bcl2-interacting mediator of cell death, BimEL, BimL, BimS
Gene ID:	10018
NCBI Accession:	NP_006529
UniProt:	O43521
Pathways:	PI3K-Akt Signaling , Neurotrophin Signaling Pathway , Tube Formation , Positive Regulation of Endopeptidase Activity

Application Details

Application Notes:	ELISA: 1/1,000. Western blotting: 1/100 - 1/500. Other applications not tested. Optimal dilutions are dependent on conditions and should be determined by the user.
Restrictions:	For Research Use only

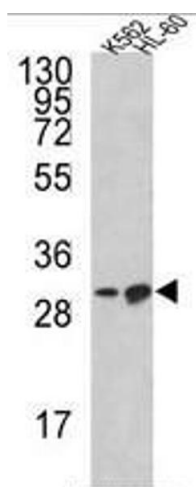
Handling

Format:	Liquid
Concentration:	0.25 mg/mL
Buffer:	PBS with 0.09 % (W/V) sodium azide
Preservative:	Sodium azide
Precaution of Use:	This product contains sodium azide: a POISONOUS AND HAZARDOUS SUBSTANCE which should be handled by trained staff only.
Handling Advice:	Avoid repeated freezing and thawing.
Storage:	4 °C/-20 °C
Storage Comment:	Store the antibody undiluted at 2-8 °C for one month or (in aliquots) at -20 °C for longer.



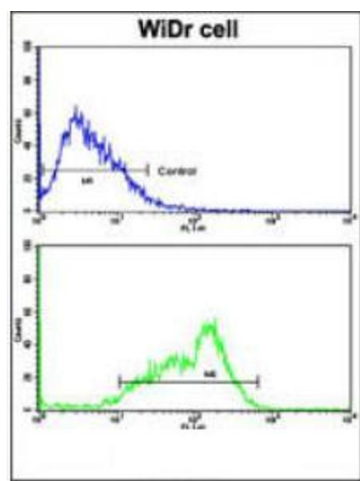
Immunohistochemistry (Paraffin-embedded Sections)

Image 1. Immunohistochemical analysis of paraffin-embedded H. kidney section using BCL2L11 Antibody (Center) . Antibody was diluted at 1/25 dilution. A undiluted biotinylated goat polyvalent antibody was used as the secondary, followed by DAB staining.



Western Blotting

Image 2. Western blot analysis of BCL2L11 Antibody (Center) in K562, HL-60 cell line lysates (35ug/lane). BCL2L11 (arrow) was detected using the purified Pab.



Flow Cytometry

Image 3. Flow cytometric analysis of WiDr cells using BCL2L11 Antibody (Center)(bottom histogram) compared to a negative control cell (top histogram). FITC-conjugated goat-anti-rabbit secondary antibodies were used for the analysis.

Please check the [product details page](#) for more images. Overall 4 images are available for ABIN453531.