



[Go to Product page](#)

Datasheet for ABIN453558
anti-CCDC3 antibody (C-Term)

1 Image

Overview

Quantity:	0.4 mL
Target:	CCDC3
Binding Specificity:	C-Term
Reactivity:	Human, Mouse
Host:	Rabbit
Clonality:	Polyclonal
Conjugate:	This CCDC3 antibody is un-conjugated
Application:	Western Blotting (WB), Enzyme Immunoassay (EIA)

Product Details

Immunogen:	KLH conjugated synthetic peptide selected from the C-term region of human CCDC3
Specificity:	This antibody reacts to CCDC3.
Purification:	Affinity chromatography on Protein A

Target Details

Target:	CCDC3
Alternative Name:	CCDC3 (CCDC3 Products)
Background:	Synonyms: Coiled-coil domain-containing protein 3, Fat/vessel-derived secretory protein, Favine
Gene ID:	83643
NCBI Accession:	NP_113643

Target Details

UniProt: [Q9BQI4](#)

Application Details

Application Notes: ELISA: 1/1,000. Western blotting: 1/100 - 1/500.
Other applications not tested.
Optimal dilutions are dependent on conditions and should be determined by the user.

Restrictions: For Research Use only

Handling

Format: Liquid

Concentration: 0.25 mg/mL

Buffer: PBS with 0.09 % (W/V) sodium azide

Preservative: Sodium azide

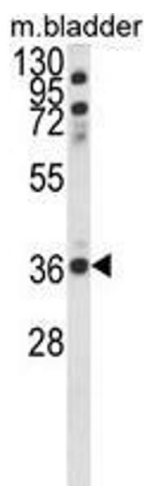
Precaution of Use: This product contains sodium azide: a POISONOUS AND HAZARDOUS SUBSTANCE which should be handled by trained staff only.

Handling Advice: Avoid repeated freezing and thawing.

Storage: 4 °C/-20 °C

Storage Comment: Store the antibody undiluted at 2-8 °C for one month or (in aliquots) at -20 °C for longer.

Images



Western Blotting

Image 1. Western blot analysis of CCDC3 Antibody (C-term) in mouse bladder tissue lysates (35ug/lane). CCDC3 (arrow) was detected using the purified Pab.