

Datasheet for ABIN453571

anti-CECR5 antibody (Middle Region)[Go to Product page](#)**1** Image

Overview

Quantity:	0.4 mL
Target:	CECR5
Binding Specificity:	Middle Region
Reactivity:	Human
Host:	Rabbit
Clonality:	Polyclonal
Conjugate:	This CECR5 antibody is un-conjugated
Application:	Western Blotting (WB), Enzyme Immunoassay (EIA)

Product Details

Immunogen:	KLH conjugated synthetic peptide selected from the Center region of human CECR5
Specificity:	This antibody reacts to CECR5.
Purification:	Affinity chromatography on Protein A

Target Details

Target:	CECR5
Alternative Name:	CECR5 (CECR5 Products)
Background:	CECR5 is widely expressed. There are 2 known isoforms produced by alternative splicing. Synonyms: Cat eye syndrome critical region protein 5
Gene ID:	27440

Target Details

NCBI Accession: [NP_060299](#)

UniProt: [Q9BXW7](#)

Application Details

Application Notes: ELISA: 1/1,000. Western blotting: 1/100 - 1/500.
Other applications not tested.
Optimal dilutions are dependent on conditions and should be determined by the user.

Restrictions: For Research Use only

Handling

Format: Liquid

Concentration: 0.25 mg/mL

Buffer: PBS with 0.09 % (W/V) sodium azide

Preservative: Sodium azide

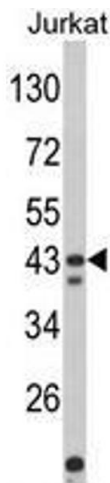
Precaution of Use: This product contains sodium azide: a POISONOUS AND HAZARDOUS SUBSTANCE which should be handled by trained staff only.

Handling Advice: Avoid repeated freezing and thawing.

Storage: 4 °C/-20 °C

Storage Comment: Store the antibody undiluted at 2-8 °C for one month or (in aliquots) at -20 °C for longer.

Images



Western Blotting

Image 1. Western blot analysis of CECR5 Antibody (Center) in Jurkat cell line lysates (35ug/lane). CECR5 (arrow) was detected using the purified Pab.