

Datasheet for ABIN453597  
**anti-CYP2C18 antibody (C-Term)**[Go to Product page](#)

## 1 Image

## Overview

|                      |                                                 |
|----------------------|-------------------------------------------------|
| Quantity:            | 0.4 mL                                          |
| Target:              | CYP2C18                                         |
| Binding Specificity: | C-Term                                          |
| Reactivity:          | Human                                           |
| Host:                | Rabbit                                          |
| Clonality:           | Polyclonal                                      |
| Conjugate:           | This CYP2C18 antibody is un-conjugated          |
| Application:         | Western Blotting (WB), Enzyme Immunoassay (EIA) |

## Product Details

|               |                                                                                       |
|---------------|---------------------------------------------------------------------------------------|
| Immunogen:    | KLH conjugated synthetic peptide selected from the C-terminal region of human CYP2C18 |
| Specificity:  | This antibody reacts to CYP2C18.                                                      |
| Purification: | Saturated Ammonium Sulfate (SAS) precipitation                                        |

## Target Details

|                   |                                                                                                                                                                                                                                                                                                                                                                       |
|-------------------|-----------------------------------------------------------------------------------------------------------------------------------------------------------------------------------------------------------------------------------------------------------------------------------------------------------------------------------------------------------------------|
| Target:           | CYP2C18                                                                                                                                                                                                                                                                                                                                                               |
| Alternative Name: | CYP2C18 ( <a href="#">CYP2C18 Products</a> )                                                                                                                                                                                                                                                                                                                          |
| Background:       | CYP2C18 is a member of the cytochrome P450 superfamily of enzymes. The cytochrome P450 proteins are monooxygenases which catalyze many reactions involved in drug metabolism and synthesis of cholesterol, steroids and other lipids. This protein localizes to the endoplasmic reticulum but its specific substrate has not yet been determined. Synonyms: CYP11C18, |

## Target Details

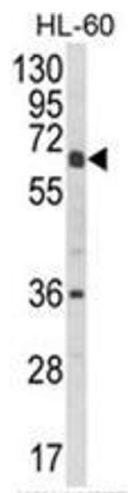
|                 |                                              |
|-----------------|----------------------------------------------|
|                 | Cytochrome P450 2C18, Cytochrome P450-6B/29C |
| Gene ID:        | 1562                                         |
| NCBI Accession: | <a href="#">NP_000763</a>                    |
| UniProt:        | <a href="#">P33260</a>                       |

## Application Details

|                    |                                                                                                                                                                          |
|--------------------|--------------------------------------------------------------------------------------------------------------------------------------------------------------------------|
| Application Notes: | ELISA: 1/1,000. Western blotting: 1/50 - 1/100.<br>Other applications not tested.<br>Optimal dilutions are dependent on conditions and should be determined by the user. |
| Restrictions:      | For Research Use only                                                                                                                                                    |

## Handling

|                    |                                                                                                                        |
|--------------------|------------------------------------------------------------------------------------------------------------------------|
| Format:            | Liquid                                                                                                                 |
| Concentration:     | 0.25 mg/mL                                                                                                             |
| Buffer:            | PBS with 0.09 % (W/V) sodium azide                                                                                     |
| Preservative:      | Sodium azide                                                                                                           |
| Precaution of Use: | This product contains sodium azide: a POISONOUS AND HAZARDOUS SUBSTANCE which should be handled by trained staff only. |
| Handling Advice:   | Avoid repeated freezing and thawing.                                                                                   |
| Storage:           | 4 °C/-20 °C                                                                                                            |
| Storage Comment:   | Store the antibody undiluted at 2-8 °C for one month or (in aliquots) at -20 °C for longer.                            |



Western Blotting

**Image 1.** Western blot analysis of CYP2C18 Antibody (C-term) in HL-60 cell line lysates (35ug/lane). CYP2C18 (arrow) was detected using the purified Pab.