

Datasheet for ABIN453607

## anti-CYP4B1 antibody (Middle Region)



[Go to Product page](#)

### 1 Image

#### Overview

Quantity:	0.4 mL
Target:	CYP4B1
Binding Specificity:	Middle Region
Reactivity:	Human
Host:	Rabbit
Clonality:	Polyclonal
Application:	Western Blotting (WB), Enzyme Immunoassay (EIA)

#### Product Details

Immunogen:	KLH conjugated synthetic peptide selected from the Center region of human CYP4B1
Specificity:	This antibody reacts to CYP4B1.
Purification:	Saturated Ammonium Sulfate (SAS) precipitation

#### Target Details

Target:	CYP4B1
Alternative Name:	CYP4B1 ( <a href="#">CYP4B1 Products</a> )
Background:	CYP4B1 is a member of the cytochrome P450 superfamily of enzymes. The cytochrome P450 proteins are monooxygenases which catalyze many reactions involved in drug metabolism and synthesis of cholesterol, steroids and other lipids. This protein localizes to the endoplasmic reticulum. In rodents, the homologous protein has been shown to metabolize certain carcinogens, however, the specific function of the human protein has not been

## Target Details

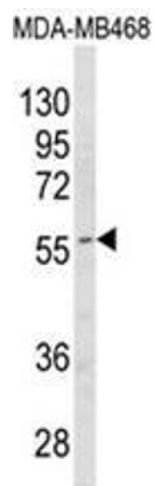
	determined.Synonyms: CYP11B1, Cytochrome P450 4B1, Cytochrome P450-HP
Gene ID:	1580
NCBI Accession:	<a href="#">NP_000770</a>
UniProt:	<a href="#">P13584</a>

## Application Details

Application Notes:	ELISA: 1/1,000. Western blotting: 1/50 - 1/100. Other applications not tested. Optimal dilutions are dependent on conditions and should be determined by the user.
Restrictions:	For Research Use only

## Handling

Format:	Liquid
Concentration:	0.25 mg/mL
Buffer:	PBS with 0.09 % (W/V) sodium azide
Preservative:	Sodium azide
Precaution of Use:	This product contains sodium azide: a POISONOUS AND HAZARDOUS SUBSTANCE which should be handled by trained staff only.
Handling Advice:	Avoid repeated freezing and thawing.
Storage:	4 °C/-20 °C
Storage Comment:	Store the antibody undiluted at 2-8 °C for one month or (in aliquots) at -20 °C for longer.



Western Blotting

**Image 1.** Western blot analysis of CYP4B1 Antibody (Center) in MDA-MB468 cell line lysates (35ug/lane). CYP4B1 (arrow) was detected using the purified Pab.