

Datasheet for ABIN453611  
**anti-PTGIS antibody (C-Term)**[Go to Product page](#)

## 2 Images

## Overview

Quantity:	0.4 mL
Target:	PTGIS
Binding Specificity:	C-Term
Reactivity:	Human
Host:	Rabbit
Clonality:	Polyclonal
Application:	Western Blotting (WB), Enzyme Immunoassay (EIA)

## Product Details

Immunogen:	KLH conjugated synthetic peptide selected from the C-terminal region of human CYP8A1
Specificity:	This antibody reacts to PTGIS.
Purification:	Saturated Ammonium Sulfate (SAS) precipitation

## Target Details

Target:	PTGIS
Alternative Name:	PTGIS ( <a href="#">PTGIS Products</a> )
Background:	CYP8A1 is a member of the cytochrome P450 superfamily of enzymes. The cytochrome P450 proteins are monooxygenases which catalyze many reactions involved in drug metabolism and synthesis of cholesterol, steroids and other lipids. However, this protein is considered a member of the cytochrome P450 superfamily on the basis of sequence similarity rather than functional similarity. This endoplasmic reticulum membrane protein catalyzes the conversion

## Target Details

of prostglandin H2 to prostacyclin (prostaglandin I2), a potent vasodilator and inhibitor of platelet aggregation. An imbalance of prostacyclin and its physiological antagonist thromboxane A2 contribute to the development of myocardial infarction, stroke, and atherosclerosis. Synonyms: CYP8, CYP8A1, Prostacyclin Synthase, Prostaglandin I2 Synthase

Gene ID: 5740

NCBI Accession: [NP\\_000952](#)

UniProt: [Q16647](#)

## Application Details

Application Notes: ELISA: 1/1,000. Western blotting: 1/50 - 1/100.  
Other applications not tested.  
Optimal dilutions are dependent on conditions and should be determined by the user.

Restrictions: For Research Use only

## Handling

Format: Liquid

Concentration: 0.25 mg/mL

Buffer: PBS with 0.09 % (W/V) sodium azide

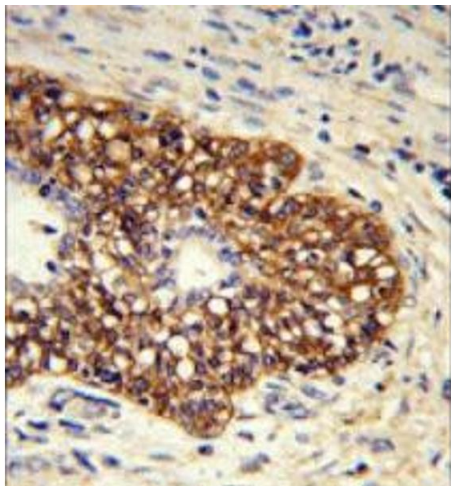
Preservative: Sodium azide

Precaution of Use: This product contains sodium azide: a POISONOUS AND HAZARDOUS SUBSTANCE which should be handled by trained staff only.

Handling Advice: Avoid repeated freezing and thawing.

Storage: 4 °C/-20 °C

Storage Comment: Store the antibody undiluted at 2-8 °C for one month or (in aliquots) at -20 °C for longer.



#### Immunohistochemistry (Paraffin-embedded Sections)

**Image 1.** Formalin-fixed and paraffin-embedded human prostate carcinoma reacted with PTGIS Antibody (C-term) followed which was peroxidase-conjugated to the secondary antibody, followed by DAB staining.



#### Western Blotting

**Image 2.** Western blot analysis of PTGIS Antibody (C-term) Cat.-No AP17980PU-N in CEM cell line lysates (35ug/lane). CYP8A1 (arrow) was detected using the purified Pab.