

Datasheet for ABIN453612
anti-CYP8B1 antibody (C-Term)[Go to Product page](#)

1 Image

Overview

Quantity:	0.4 mL
Target:	CYP8B1
Binding Specificity:	C-Term
Reactivity:	Human
Host:	Rabbit
Clonality:	Polyclonal
Application:	Western Blotting (WB), Enzyme Immunoassay (EIA)

Product Details

Immunogen:	KLH conjugated synthetic peptide selected from the C-terminal region of human CYP8B1
Specificity:	This antibody reacts to CYP8B1.
Purification:	Saturated Ammonium Sulfate (SAS) precipitation

Target Details

Target:	CYP8B1
Alternative Name:	CYP8B1 (CYP8B1 Products)
Background:	CYP8B1 is a member of the cytochrome P450 superfamily of enzymes. The cytochrome P450 proteins are monooxygenases which catalyze many reactions involved in drug metabolism and synthesis of cholesterol, steroids and other lipids. This endoplasmic reticulum membrane protein catalyzes the conversion of 7 alpha-hydroxy-4-cholesten-3-one into 7-alpha,12-alpha-dihydroxy-4-cholesten-3-one. The balance between these two steroids determines the relative

Target Details

amounts of cholic acid and chenodeoxycholic acid both of which are secreted in the bile and affect the solubility of cholesterol. This gene is unique among the cytochrome P450 genes in that it is intronless.Synonyms: 7-alpha-hydroxy-4-cholesten-3-one 12-alpha-hydroxylase, 7-alpha-hydroxycholest-4-en-3-one 12-alpha-hydroxylase, CYP12, CYPVIII B1, Cytochrome P450 8B1, Sterol 12-alpha-hydroxylase

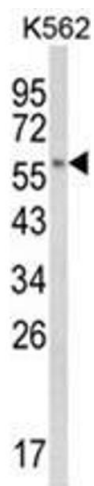
Gene ID:	1582
NCBI Accession:	NP_004382
UniProt:	Q9UNU6

Application Details

Application Notes:	ELISA: 1/1,000. Western blotting: 1/50 - 1/100. Other applications not tested. Optimal dilutions are dependent on conditions and should be determined by the user.
Restrictions:	For Research Use only

Handling

Format:	Liquid
Concentration:	0.25 mg/mL
Buffer:	PBS with 0.09 % (W/V) sodium azide
Preservative:	Sodium azide
Precaution of Use:	This product contains sodium azide: a POISONOUS AND HAZARDOUS SUBSTANCE which should be handled by trained staff only.
Handling Advice:	Avoid repeated freezing and thawing.
Storage:	4 °C/-20 °C
Storage Comment:	Store the antibody undiluted at 2-8 °C for one month or (in aliquots) at -20 °C for longer.



Western Blotting

Image 1. Western blot analysis of CYP8B1 Antibody (C-term) in K562 cell line lysates (35ug/lane). CYP8B1 (arrow) was detected using the purified Pab.