

Datasheet for ABIN453623

anti-Dolichol Kinase antibody (AA 318-348)[Go to Product page](#)**1** Image

Overview

Quantity:	0.4 mL
Target:	Dolichol Kinase (DOLK)
Binding Specificity:	AA 318-348
Reactivity:	Human
Host:	Rabbit
Clonality:	Polyclonal
Conjugate:	This Dolichol Kinase antibody is un-conjugated
Application:	Western Blotting (WB), Flow Cytometry (FACS), Immunohistochemistry (Paraffin-embedded Sections) (IHC (p)), Enzyme Immunoassay (EIA)

Product Details

Immunogen:	KLH conjugated synthetic peptide selected between 318~348 amino acids from the Center region of human DOLK.
Specificity:	This antibody reacts to DOLK.
Purification:	Affinity chromatography on Protein A

Target Details

Target:	Dolichol Kinase (DOLK)
Alternative Name:	Dolichol Kinase (DOLK Products)
Background:	DOLK is involved in the synthesis of the sugar donor Dol-P-Man which is required in the synthesis of N-linked and O-linked oligosaccharides and for that of GPI anchors (By

Target Details

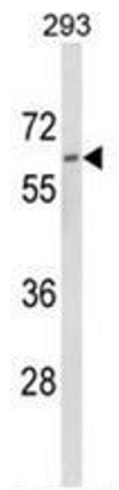
	similarity).Synonyms: DOLK, KIAA1094, TMEM15, Transmembrane protein 15
Gene ID:	22845
NCBI Accession:	NP_055723
UniProt:	Q9UPQ8

Application Details

Application Notes:	ELISA: 1/1,000. Western blotting: 1/100 - 1/500. Other applications not tested. Optimal dilutions are dependent on conditions and should be determined by the user.
Restrictions:	For Research Use only

Handling

Format:	Liquid
Concentration:	0.25 mg/mL
Buffer:	PBS with 0.09 % (W/V) sodium azide
Preservative:	Sodium azide
Precaution of Use:	This product contains sodium azide: a POISONOUS AND HAZARDOUS SUBSTANCE which should be handled by trained staff only.
Handling Advice:	Avoid repeated freezing and thawing.
Storage:	4 °C/-20 °C
Storage Comment:	Store the antibody undiluted at 2-8 °C for one month or (in aliquots) at -20 °C for longer.



Western Blotting

Image 1. Western blot analysis of DOLK Antibody (Center) in 293 cell line lysates (35ug/lane). DOLK (arrow) was detected using the purified Pab.